



# SUBLETTE COUNTY FAIR

**JULY 24-27, 2024**

Additional Events

July 19-23

July 28



BIG PINEY, WY

[WWW.SUBLETTECOUNTYFAIR.COM](http://WWW.SUBLETTECOUNTYFAIR.COM)

Sublette County Fair

# CONTACT INFORMATION

2024

## SUBLETTE COUNTY FAIR

Phone: 307-276-5373

Fax: 307-276-3864

[www.sublettecountyfair.com](http://www.sublettecountyfair.com)

Fair Manager

Kailey Barlow                      kailey@sublettecountyfair.com

## WYOMING STATE FAIR

[www.wystatefair.com](http://www.wystatefair.com)

General Manager

Courtney Conkle                      courtny.conkle@wyo.gov

Assistant Manager

Kris Mitchell                      kris.mitchell@wyo.gov

## SUBLETTE COUNTY EXTENSION

Phone: 307-367-4380

4-H Educator

Tiera Bevilacqua                      tarndorf@uwyo.edu

Administrative Assistant

Amy Calhoun                      sublette@uwyo.edu

Ag & Natural Resources Extension Educator

Dagan Montgomery                      dmontgo8@uwyo.edu

## PINEDALE FFA

Advisor

Anna Hays                      annahays@sub1.org

*It is the mission of the Sublette County Fair Board to produce a wholesome, entertaining, and educational fair, which enhances the spirit of community, supports and provides a venue for the 4-H and FFA programs, and will showcase the rural heritage of Sublette County and the surrounding area.*



# ALCOHOL POLICY

2024

Together, the Sublette County Fair Board, Sublette County Fairgrounds, and the Sublette County Sheriff's Office will be working to curb juvenile and underage drinking at the fair. Please review our policies.

- Drinking alcohol by anyone under 21 is not allowed on the fairgrounds. Violators will be considered trespassers and will be removed from the fairgrounds.
- No coolers will be allowed at any event.
- All alcohol products on the fairgrounds must be secured when not attended (in a locked cooler, stored inside a fridge, etc).
- No alcohol is allowed in any building while 4-H or FFA events are being held.
- No glass bottles are allowed on the fairgrounds.
- No alcohol products may be left unattended at any time, for any reason.

Violations of any of these rules by 4-H or FFA members will result in disqualification from any and all Sublette County Fair contests, events, and shows, including the livestock sale. Any awards already received will be forfeited. Violators will be asked to remove their animal(s) and/or exhibit(s) immediately.

# TABLE OF CONTENTS

2024

Schedule _____	5-7
Sponsors _____	8-13
Rules _____	14-32
4-H / FFA _____	33-46
Open Class _____	47-53
Entertainment _____	54-56


**SNAP SOME**

**IN MEMORY OF JOAN MITCHELL**

**PICTURES...**

**WIN UP TO \$500**

In memory of Joan Mitchell, who dedicated countless hours taking pictures during fair, please help us keep her community spirit alive by sharing pictures that you take during fair! You don't have to be a professional photographer to share your pictures. Pull out your phone and snap a picture or a lot of pictures of your favorite things at fair! Scan the QR code and upload your photos to our Google Photos. The best ten pictures will be selected by the fair board and the photographers will receive a \$50 award!



Sublette County Fair  
**SCHEDULE**  
2024

**TUESDAY, APRIL 9, 2024**

6:00PM — Air Pistol County 4-H Shoot (Ice Arena)

**TUESDAY, APRIL 30, 2024**

4:00PM — Air Rifle County 4-H Shoot (Ice Arena)

**FRIDAY, MAY 17, 2024**

3:00PM — Archery County 4-H Shoot (Event Center)

**TUESDAY, JUNE 4, 2024**

6:00PM — .22 Pistol County 4-H Shoot (Pinedale Gun Range)

**THURSDAY, JUNE 6, 2024**

6:00PM — Muzzleloader County 4-H Shoot (Big Piney Gun Range)

**MONDAY, JULY 1, 2024**

6:00PM — Shotgun County 4-H Shoot (Big Piney Gun Range)

**FRIDAY, JULY 19, 2024**

7:30AM — Rocket Launch (Buss Fear Arena Area)

9:00AM — 4-H & FFA Exhibit Hall Judging (Commercial Building)

8:00PM — Barrel Race (Ag Center)

**SATURDAY, JULY 20, 2024**

10:00AM — Barrel Race (Ag Center)

3:00PM — Team Branding (Ag Center)

**SUNDAY, JULY 21, 2024**

12:00PM — Team Roping (Ag Center)

**MONDAY, JULY 22, 2024**

8:00AM to 5:30PM — Open Class Exhibit Check-In (Commercial Building)

8:30AM — Junior Horse Show (Ag Center)

2:00PM — Cat & Dog Show (Event Center)

6:00PM — Open Class Exhibit Judging (Commercial Building)

**TUESDAY, JULY 23, 2024**

5:00AM to 10:00PM — Event Center Open (Event Center)

8:00AM — Junior Horse Show (Ag Center)

9:00AM — Poultry Check-In (Poultry Barn)

10:00AM — Poultry Show (Poultry Barn)

4:00PM to 8:00PM — Livestock Check-In (Event Center)

**WEDNESDAY, JULY 24, 2024**

5:00AM to 10:00PM — Event Center Open (Event Center)

7:00AM to 9:00AM — Swine Check-In (Event Center)

7:00AM to 11:00AM — Sheep, Goat, Beef Check-In (Event Center)

9:00AM — Swine Weigh-In & Ultrasound (Event Center)

10:00AM to 6:00PM — Art Show Open (Community Hall)

10:00AM to 7:30PM — Exhibit Building Open (Commercial Building)

11:00AM — Sheep, Goat, Beef Weigh-In & Ultrasound (Event Center)

11:00AM — Barnyard Races (Grassy Midway)

11:00AM to 8:00PM — Wild West Fun Park (Grassy Midway)

11:00AM to 8:00PM — Petting Zoo (Vendor Barn)

11:30AM — Lanky the Clown (Strolling)

12:00PM to 9:00PM — Adventure Zone & Carnival Games (South Grassy Area)

12:00PM — Off Axis Stunt Show (Pavement)

12:30PM — Alex Clark, Comedian Juggler (Free Stage)

12:30PM — Barnyard Races (Grassy Midway)

1:00PM — Wild West Fast Draw (Grassy Midway)

1:15PM — Corrie J, Hypnotist (Free Stage)

2:00PM — Lanky the Clown (Strolling)

2:00PM — Barnyard Races (Grassy Midway)

2:15PM — Jared Rogerson, Music (Free Stage)

2:30PM — Off Axis Stunt Show (Pavement)

3:00PM — Wild West Fast Draw (Grassy Midway)

3:00PM — Alex Clark, Comedian Juggler (Free Stage)

3:00PM — Swine Showmanship (Event Center)

3:45PM — Corrie J, Hypnotist (Free Stage)

4:00PM — Barnyard Races (Grassy Midway)

4:30PM — Lanky's Daily Contest (Free Stage Area)

5:00PM — Off Axis Stunt Show (Pavement)

Sublette County Fair  
**SCHEDULE**  
 2024

5:00PM — Alex Clark, Comedian Juggler (Free Stage)  
 5:30PM — Lanky the Clown (Strolling)  
 5:30PM — Barnyard Races (Grassy Midway)  
 6:00PM — Jared Rogerson, Music (Free Stage)  
 6:00PM — Wild West Fast Draw (Grassy Midway)  
 6:30PM — Corrie J, Mentalist (Strolling)  
 7:00PM — Taste of Insanity (Outdoor Arena)  
 7:00PM — Barnyard Races (Grassy Midway)  
 7:30PM — Jared Rogerson, Music (Free Stage)  
 8:30PM — Dance (Free Stage)

**THURSDAY, JULY 25, 2024**

5:00AM to 10:00PM — Event Center Open (Event Center)  
 9:00AM — Sheep & Goat Show, Followed by Born & Raised Market Lamb Show (Event Center)  
 10:00AM to 6:00PM — Art Show Open (Community Hall)  
 10:00AM to 7:30PM — Exhibit Building Open (Commercial Building)  
 10:30AM — Big Piney Library Tea Party (Event Center)  
 11:00AM — Off Axis Stunt Show (Pavement)  
 11:00AM to 8:00PM — Wild West Fun Park (Grassy Midway)  
 11:00AM to 8:00PM — Petting Zoo (Vendor Barn)  
 11:30AM — Lanky the Clown (Strolling)  
 11:30AM — Barnyard Races (Grassy Midway)  
 12:00PM — Wild West Fast Draw (Grassy Midway)  
 12:00PM — Corrie J, Hypnotist (Free Stage)  
 12:00PM to 9:00PM — Adventure Zone & Carnival Games (South Grassy Area)  
 12:30PM — Lanky the Clown (Strolling)  
 1:00PM — Tried and True, Music (Free Stage)  
 1:00PM — Barnyard Races (Grassy Midway)  
 1:00PM — Chocolate Dessert Bake-Off Tasting (Commercial Building)  
 1:00PM — Home Butcher Exhibit Tasting (Commercial Building)  
 1:30PM — Off Axis Stunt Show (Pavement)  
 2:00PM — Market Swine Show (Event Center)  
 2:00PM — Wild West Fast Draw (Grassy Midway)  
 2:00PM — Corrie J, Mentalist (Strolling)  
 2:45PM — Alex Clark, Comedian Juggler (Free Stage)  
 3:00PM — Barnyard Races (Grassy Midway)

3:30PM — Tried and True, Music (Free Stage)  
 4:00PM — Lanky's Daily Contest (Free Stage Area)  
 4:30PM — Alex Clark, Comedian Juggler (Free Stage)  
 4:30PM — Barnyard Races (Grassy Midway)  
 5:00PM — Lanky the Clown (Strolling)  
 5:00PM — Showmanship Jackpot (Event Center)  
 5:30PM — Off Axis Stunt Show (Pavement)  
 6:00PM — Barnyard Races (Grassy Midway)  
 6:00PM — Corrie J, Hypnotist (Free Stage)  
 6:30PM — Wild West Fast Draw (Grassy Midway)  
 7:00PM — Tried and True, Music (Free Stage)  
 7:00PM — Little Buckaroo Rodeo (Ag Center)  
 7:30PM — Barnyard Races (Grassy Midway)  
 7:45PM — Alex Clark, Comedian Juggler (Free Stage)  
 8:30PM — Dance (Free Stage)

**FRIDAY, JULY 26, 2024**

5:00AM to 10:00PM — Event Center Open (Event Center)  
 9:00AM — Beef Show (Event Center)  
 10:00AM to 6:00PM — Art Show Open (Community Hall)  
 10:00AM to 7:30PM — Exhibit Building Open (Commercial Building)  
 11:00AM — Wild West Fast Draw (Grassy Midway)  
 11:00AM to 8:00PM — Wild West Fun Park (Grassy Midway)  
 11:00AM to 8:00PM — Petting Zoo (Vendor Barn)  
 12:00PM to 9:00PM — Adventure Zone & Carnival Games (South Grassy Area)  
 12:00PM — Barnyard Races (Grassy Midway)  
 12:15PM — Corrie J, Mentalist (Strolling)  
 12:45PM — Jane Bell, Music (Free Stage)  
 1:00PM — Off Axis Stunt Show (Pavement)  
 1:00PM — Rabbit Show (Event Center)  
 1:30PM — Barnyard Races (Grassy Midway)  
 1:30PM — Corrie J, Hypnotist (Free Stage)  
 2:00PM — Lanky the Clown (Strolling)  
 2:30PM — Off Axis Stunt Show (Pavement)  
 2:45PM — Alex Clark, Comedian Juggler (Free Stage)  
 3:00PM — Barnyard Races (Grassy Midway)  
 3:30PM — Jane Bell, Music (Free Stage)  
 3:30PM — Wild West Fast Draw (Grassy Midway)

# Sublette County Fair

# SCHEDULE

## 2024

3:30PM — Lanky the Clown (Strolling)  
4:15PM — Corrie J, Hypnotist (Free Stage)  
4:30PM — Barnyard Races (Grassy Midway)  
4:30PM — Round Robin (Event Center)  
4:45PM — Lanky the Clown (Strolling)  
5:00PM — Wild West Fast Draw (Grassy Midway)  
5:30PM — Alex Clark, Comedian Juggler (Free Stage)  
6:00PM — Barnyard Races (Grassy Midway)  
6:15PM — Jane Bell, Music (Free Stage)  
6:30PM — Lanky's Daily Contest (Free Stage Area)  
7:00PM — Off Axis Stunt Show (Pavement)  
7:00PM — Parade of Champions (Ag Center)  
7:00PM — Horse Pulls (Ag Center)  
7:30PM — Alex Clark, Comedian Juggler (Free Stage)  
7:30PM — Barnyard Races (Grassy Midway)  
8:30PM — Dance (Free Stage)

## SATURDAY, JULY 27, 2024

5:00AM to 10:00PM — Event Center Open (Event Center)  
8:00AM to 2:00PM — Premium Award Pickup (Commercial Building Office)  
9:00AM — Bred & Raised Beef Show (Event Center)  
10:00AM to 5:00PM — Art Show Open (Community Hall)  
10:00AM to 7:30PM — Exhibit Building Open (Commercial Building)  
11:00AM — Alex Clark, Comedian Juggler (Free Stage)  
11:00AM — Barnyard Races (Grassy Midway)  
11:00AM to 8:00PM — Wild West Fun Park (Grassy Midway)  
11:00AM to 8:00PM — Petting Zoo (Vendor Barn)  
11:30AM — Buyer's Appreciation Luncheon (Event Center)  
11:30AM — Lanky the Clown (Strolling)  
11:45AM — Corrie J, Hypnotist (Free Stage)  
12:00PM to 9:00PM — Adventure Zone & Carnival Games (South Grassy Area)  
12:30PM — Barnyard Races (Grassy Midway)  
12:45PM — Jane Bell, Music (Free Stage)  
1:00PM — Lanky's Daily Contest (Free Stage Area)  
1:15PM — Livestock Awards (Event Center)  
1:30PM — Livestock Sale (Event Center)  
1:30PM — Alex Clark, Comedian Juggler (Free Stage)

2:00PM — Off Axis Stunt Show (Pavement)  
2:15PM — Corrie J, Hypnotist (Free Stage)  
2:30PM — Barnyard Races (Grassy Midway)  
3:00PM — Wild West Fast Draw (Grassy Midway)  
3:15PM — Jane Bell, Music (Free Stage)  
3:30PM — Corrie J, Mentalist (Strolling)  
4:00PM — Barnyard Races (Grassy Midway)  
4:00PM — Alex Clark, Comedian Juggler (Free Stage)  
4:30PM — Off Axis Stunt Show (Pavement)  
5:00PM — Lanky the Clown (Strolling)  
5:00PM — Wild West Fast Draw (Grassy Midway)  
5:00PM to 6:00PM — Free Stage Area Closed (Free Stage)  
5:30PM — Cornhole Tournament (Ag Center)  
6:00PM — Barnyard Races (Grassy Midway)  
6:30PM — Lanky the Clown (Strolling)  
6:45PM — Jane Bell, Music (Free Stage)  
7:15PM — Off Axis Stunt Show (Pavement)  
7:30PM — Wild West Fast Draw (Grassy Midway)  
8:00PM — Huckleberry Road Concert (Free Stage)

## SUNDAY, JULY 28, 2024

8:00AM to 2:00PM — Premium Award Pickup (Commercial Building Office)  
8:00AM to 2:00PM — Exhibit Release  
10:00AM — Archery Shoot (Ag Center)

**This schedule is subject to change. View the most up to date schedule using the QR code below or by visiting [www.sublettecountyfair.com](http://www.sublettecountyfair.com).**



Scan the QR code below to upload your photos of fair and win up to \$500! More information can be found on page 4.



Sublette County Fair  
**SPONSORS**  
2024

**MAKING  
MODERN LIFE  
POSSIBLE.**



Petroleum and natural gas are the energy sources that make modern life possible, **and we are proud to work with our neighbors in bringing them to the world.**



Sublette County Fair  
**SPONSORS**  
2024

# CHAMPIONX

Serving you for over a century. Forward-thinking innovations. Unmatched global supply chain. Market-shaping solutions.

**ChampionX is proud to support Sublette County 4-H & FFA members!**



A LOCALLY OWNED AND OPERATED COMPANY, OFFERING:

- REDI MIX CONCRETE**
- SAND AND GRAVEL**
- EXCAVATION**
- ASPHALT PAVING**
- SEPTIC SYSTEMS**
- SNOW PLOWING**
- RECREATION AREAS**



**TELETRACTORS, INC. IS A PROUD SUPPORTER OF THE SUBLETTE COUNTY FAIR**

Sublette County Fair  
**SPONSORS**  
2024



**(307) 733-5337**

**THANK YOU TO OUR BIGGEST SUPPORTERS AND ALL OTHER SPONSORS!**

*Our biggest supporters...*

**MPLX**

Champion X

Rocky Mountain Yeti

Teletractors, Inc.

Dennis Trucking

*\$500+ Sponsors*

Rocky Mountain Power Sports

NAPA—Pinedale Auto Supply

Meadow Canyon Ready Mix

Boulder Store

First Bank

Milleg Ranch / Sandra Milleg

Legend Hydrovac

Pinedale FFA

Sarah Faith Ranch

Town of Marbleton

*\$250+ Sponsors*

Alan & Donna Vickrey

Alsade Limited / Guio Ranch

Get Western Electric

Grindstone Cattle Company

Helm's Handy Helpers

James H. Helm, CPA

John & Jody Fear

Nancy Espenscheid

Sara & Blake Swift

Wayne & Marsha Barlow

Windbigler Transport

Sublette County Fair  
**SPONSORS**  
2024

## OPEN CLASS STATIC EXHIBITS

### Cash Prizes

Overall Outstanding Floriculture — Nancy Espenscheid  
Outstanding Youth Floriculture — Sage & Snow Garden Club  
Outstanding Senior Floriculture — Town of Marbleton  
People's Choice Floriculture — Sage & Snow Garden Club  
Overall Outstanding Needlework — First Bank  
Outstanding Youth Needlework — Barney Ranches, Inc.  
Outstanding Senior Needlework — Wood Law Office  
People's Choice Needlework — Milleg Ranch  
Overall Outstanding Quilting — Deanne Bradley  
Outstanding Youth Quilting — Bronx Community Club  
Outstanding Senior Quilting — Wayne & Marsha Barlow  
People's Choice Quilting — Deanne Bradley  
Overall Outstanding Sewing — Deanne Bradley  
Outstanding Youth Sewing — Barney Ranches, Inc.  
Outstanding Senior Sewing — Nancy Espenscheid  
People's Choice Sewing — Barney Ranches, Inc.  
Overall Outstanding Culinary — Green River Valley Cattlewomen  
Outstanding Youth Culinary — First Bank  
Outstanding Senior Culinary — Larry & Margie Braun  
People's Choice Culinary — Green River Valley Cattlewomen  
Overall Outstanding Art — Town of Marbleton  
Outstanding Youth Art — Tegeler & Associates / Zach Wenz  
Outstanding Senior Art — Sarah Faith Ranch  
People's Choice Art — NAPA: Pinedale Auto Supply  
Overall Outstanding Craft — Ken Fear  
Outstanding Youth Craft — Get Western Electric  
Outstanding Senior Craft — Milleg Ranch  
People's Choice Craft — Town of Marbleton  
Overall Outstanding Photography — Alsade Limited / Guio Ranch  
Outstanding Youth Photography — Get Western Electric  
Outstanding Senior Photography — Deanne Bradley  
People's Choice Photography — Town of Marbleton  
Overall Outstanding Collectibles — Sandra Milleg  
People's Choice Collectibles — First Bank  
People's Choice Display Only Exhibit — Sarah Faith Ranch

## 4-H STATIC EXHIBITS

### Cash Prizes

Champion Junior Photography — Town of Marbleton  
Champion Intermediate Photography — Town of Marbleton  
Champion Senior Photography — Get Western Electric  
Champion Junior Visual Arts — Get Western Electric  
Champion Intermediate Visual Arts — Wayne & Marsha Barlow  
Champion Senior Visual Arts — Milleg Ranch  
Champion Junior Cake Decorating — Bank of Jackson Hole  
Champion Intermediate Cake Decorating — Bank of Jackson Hole  
Champion Senior Cake Decorating — Bousman CPA  
Champion Junior Food — Bronx Community Club  
Champion Intermediate Food — Budd's & Blooms  
Champion Senior Food — Greg & Robin Schamber  
Champion Junior Craft — Wayne & Marsha Barlow  
Champion Intermediate Craft — Barney Ranches, Inc.  
Champion Senior Craft — Greg & Robin Schamber  
Champion Junior Crocheting / Knitting — Bank of Jackson Hole  
Champion Intermediate Crocheting / Knitting — Bank of Jackson Hole  
Champion Senior Crocheting / Knitting — Bousman CPA  
Champion Junior Quilting — Wayne & Marsha Barlow  
Champion Intermediate Quilting — Deanne Bradley  
Champion Senior Quilting — Town of Marbleton  
Champion Junior Natural Resources — Bousman CPA  
Champion Intermediate Natural Resources — Sarah Faith Ranch  
Champion Senior Natural Resources — Tegeler & Associates / Zach Wenz  
Champion Junior Leatherwork — Sandra Milleg  
Champion Intermediate Leatherwork — Alan & Donna Vickrey  
Champion Senior Leatherwork — Alan & Donna Vickrey  
Champion Junior Aerospace — Alan & Donna Vickrey  
Champion Intermediate Aerospace — Alan & Donna Vickrey  
Champion Senior Aerospace — Alan & Donna Vickrey  
Champion Junior General Exhibit — Greg & Robin Schamber  
Champion Intermediate General Exhibit — Deanne Bradley  
Champion Senior General Exhibit — Greg & Robin Schamber  
Champion PeeWee Static Exhibit — Greg & Robin Schamber

Sublette County Fair  
**SPONSORS**  
2024

## 4-H DOG & CAT SHOWS

### Cash Prizes

Dog Show Award: Senior Showmanship — Wood Law Office  
Dog Show Award: Intermediate Showmanship — Larry & Margie Braun  
Dog Show Award: Junior Showmanship — Bill & Susan Lehr  
Dog Show Award: Conformation — Sandra Milleg  
Dog Show Award: Obedience — NAPA: Pinedale Auto Supply  
Dog Show Award: Rally — Bill & Susan Lehr  
Dog Show Award: Agility — Wayne & Marsha Barlow  
Cat Show Award: Senior Showmanship — NAPA: Pinedale Auto Supply  
Cat Show Award: Intermediate Showmanship — Pinedale Animal Hospital  
Cat Show Award: Junior Showmanship — Town of Marbleton  
Cat Show Award: Conformation — Pinedale Animal Hospital  
Cat Show Award: Fun Class Overall — Pinedale Animal Hospital

## 4-H & FFA SHOWS

### Cash Prizes

Champion Feeder Beef — Grindstone Cattle Company  
Champion Breeding Beef — Ken Fear  
Champion Dairy Cattle — Pinedale Animal Hospital  
Champion Feeder Lamb — Rogers High Noon Feed  
Champion Breeding Sheep — NAPA: Pinedale Auto Supply  
Champion Feeder Goat — Rogers High Noon Feed  
Champion Breeding Goat — First Bank  
Champion Dairy Goat — Greg & Robin Schamber  
Champion Feeder Hog — Rogers High Noon Feed  
Champion Breeding Hog — Rogers High Noon Feed

### Belt Buckles

Champion Market Beef — Dennis Trucking  
Reserve Champion Market Beef — Dennis Trucking  
Champion Market Swine — Dennis Trucking  
Reserve Champion Market Swine — Dennis Trucking  
Champion Market Lamb — Dennis Trucking  
Reserve Champion Market Lamb — Dennis Trucking

Champion Market Goat — Dennis Trucking  
Reserve Champion Market Goat — Dennis Trucking  
Champion Poultry — Bucky's Outdoors  
Champion Rabbit — Town of Marbleton  
Champion All-Around Horse: Junior — Alan & Donna Vickrey  
Champion All-Around Horse: Intermediate — Dr. Vern Aultman  
Champion All-Around Horse: Senior — James H. Helm, CPA  
Horse: First Year — Wayne & Marsha Barlow  
Horse: Junior — Sandra Milleg  
Horse: Intermediate — **Available**  
Horse: Senior — John & Jody Fear  
Horse: FFA — Pinedale FFA  
Beef: First Year — Green River Valley Cattlewomen  
Beef: Junior — Steve James Ranch & Cutting Horses  
Beef: Intermediate — Nancy Espenscheid  
Beef: Senior — Jack & Lynda Sims, Tim & Kellee Sims  
Beef: FFA — Pinedale FFA  
Swine: First Year — Get Western Electric  
Swine: Junior — Milleg Ranch  
Swine: Intermediate — Andy & Melody Grazin  
Swine: Senior — Wayne & Marsha Barlow  
Swine: FFA — Pinedale FFA  
Sheep: First Year — Milleg Ranch  
Sheep: Junior — Nancy Espenscheid  
Sheep: Intermediate — Legend Hydrovac  
Sheep: Senior — John & Jody Fear  
Sheep: FFA — Pinedale FFA  
Goat: First Year — First Bank  
Goat: Junior — Helm's Handy Helpers  
Goat: Intermediate — Town of Marbleton  
Goat: Senior — Sara & Blake Swift  
Goat: FFA — Pinedale FFA  
Poultry: First Year — Town of Marbleton  
Poultry: Junior — James H. Helm, CPA  
Poultry: Intermediate — Legend Hydrovac  
Poultry: Senior — Grindstone Cattle Company  
Rabbit: First Year — Windbigler Transport  
Rabbit: Junior — First Bank  
Rabbit: Intermediate — Sarah Faith Ranch  
Rabbit: Senior — Alsade Limited / Guio Ranch

Sublette County Fair  
**SPONSORS**  
 2024

Round Robin: Senior Champion — First Bank  
 Round Robin: Senior Reserve Champion — Sarah Faith Ranch  
 Beef Sportsmanship — Grindstone Cattle Company  
 Swine Sportsmanship — Windbigler Transport  
 Sheep Sportsmanship — Helm's Handy Helpers  
 Goat Sportsmanship — Legend Hydrovac  
 Horse Sportsmanship — Sarah Faith Ranch  
 Beef Ultrasound — Legend Hydrovac  
 Swine Ultrasound — Get Western Electric  
 Sheep Ultrasound — James H. Helm, CPA  
 Goat Ultrasound — Sara & Blake Swift

*Jackets*

Round Robin: Intermediate Champion — Alan & Donna Vickrey  
 Round Robin: Intermediate Reserve Champion — Sandra Milleg

*Banners*

Champion Market Beef — Nancy Espenscheid  
 Reserve Champion Market Beef — Helm's Handy Helpers  
 Champion Market Swine — Rogers High Noon Feed  
 Reserve Champion Market Swine — James H. Helm, CPA  
 Champion Market Lamb — Bucky's Outdoors  
 Reserve Champion Market Lamb — Bucky's Outdoors  
 Champion Market Goat — Budd's & Blooms  
 Reserve Champion Market Goat — James H. Helm, CPA

*Assorted Awards*

PeeWee Showmanship Prizes — Menck Club Lambs



**LITTLE BUCKAROO RODEO**

*Belt Buckles*

Bareback 7-9 — Alsade Limited / Guio Ranch  
 Bareback 10-12 — Bob & Terrie Springman  
 Calf Riding 7-9 — Get Western Electric  
 Mini Bull Riding 10-12 — Tegeler & Associates / Zach Wenz  
 Stick Horse Barrels 4 & Under — Milleg Ranch  
 Stick Horse Barrels 5-6 — Pinedale Animal Hospital  
 Stick Horse Barrels 7-9 — Pinedale Animal Hospital  
 Goat Tail Tying 5-6 — Greg & Robin Schamber  
 Goat Tail Tying 7-9 — Tegeler & Associates / Zach Wenz  
 Goat Tail Tying 10-12 — First Bank  
 Calf Roping 7-9 — Sarah Faith Ranch  
 Calf Roping 10-12 — Dr. Vern Aultman  
 Calf Roping 13-15 — Alsade Limited / Guio Ranch  
 Calf Roping 16-18 — Bousman CPA  
 Sheep Riding Under 6 — First Bank

**CONTESTS**

*Cash Prizes*

Recycled Western Art — **Available**  
 Chocolate Dessert Bake-Off — **Available**  
 The Home Butcher — Bob & Terrie Springman  
 Coloring Contest — Bank of Jackson Hole  
 Painted Rock Contest — JL Gray Rock Shop



# GENERAL RULES & REGULATIONS

2024

## Alcohol Policies for the Sublette County Fair

Together, the Sublette County Fair Board, Sublette County Fairgrounds, and the Sublette County Sheriff's Office will be working to curb juvenile and underage drinking at the fair. Please review our policies.

- Drinking alcohol by anyone under 21 is not allowed on the fairgrounds. Violators will be considered trespassers and will be removed from the fairgrounds.
- No coolers will be allowed at any event.
- All alcohol products on the fairgrounds must be secured when not attended (in a locked cooler, stored inside a fridge, etc).
- No alcohol is allowed in any building while 4-H or FFA events are being held.
- No glass bottles are allowed on the fairgrounds.
- No alcohol products may be left unattended at any time, for any reason.

Violations of any of these rules by 4-H or FFA members will result in disqualification from any and all Sublette County Fair contests, events, and shows, including the livestock sale. Any awards already received will be forfeited. Violators will be asked to remove their animal(s) and/or exhibit(s) immediately.

- **Entry Submission:** Exhibitors can submit most entries online using the link provided at [www.sublettecountyfair.com](http://www.sublettecountyfair.com). There are no entry fees, unless otherwise noted.
- Exhibitors in the Sublette County Fair are limited to youth enrolled in the Sublette County 4-H and/or FFA programs, with exceptions for the open class events.
- The Sublette County Fair Board reserves the final and absolute right to interpret these rules and regulations, and arbitrarily to settle and determine all matters and differences that may arise.
- **Ethics:** The showing of unethically fitted livestock or livestock of an ineligible age for exhibition in the class entered is prohibited. Unethical fitting will be deemed to consist of any method of altering the natural conformation of any part of the animal's body. Animals showing, in the opinion of the judge, signs of having been operated upon or tampered with for the purpose of concealing faults in

the conformation or with intent to deceive relative to the animal's soundness, will be disqualified. Every exhibitor, in consideration of their entry being accepted by the Sublette County Fair, agrees to submit any animals so entered, to inspection by a veterinarian appointed by the management, and agrees to have such animal submitted to any tests as may be designated and requested by the veterinarian, and agrees that the conclusions reached by the veterinarian as to whether such animal is unethically fitted or over age, shall be final, without recourse against the Sublette County Fair, its management team, or any of its representatives.

- **Decision of Judges Final:** The decision of the judges will be final in all cases, except cases of formal protest or where mistake, fraud, misrepresentation or collusion, not discovered at the time of the award, is proven. In such cases, the show management or such referee as it may appoint may make the final decision. Such cases may be sent to the Sublette County Fair Board from whose decision there can be no appeal.
- **Interference with Judges:** If any exhibitor, in any way, whether the person or by the representative, interferes with the judge(s), or shows any disrespect to them or to show officials, fair management may excuse him/her from the ring and exclude him/her from further competition; exhibitor premiums or awards that have been awarded may also be withheld.
- **Unworthy Exhibit:** Judges shall not award a prize to an unworthy exhibit. It is the intention of fair management that no premium or distinction of any kind shall be given to any exhibit that is not deserving. No animal or articles shall receive a prize when deemed unworthy by the awarding judges, though it may be the only one of its kind entered. When an animal or article is unworthy of first prize, it may be awarded second or third or none, as the judges deem worthy.
- **Overnight Security:** There will be overnight security on the fairgrounds and in the Event Center for the duration of fair. The Event Center will be locked and no entry will be permitted into the building between the hours of 10:00PM and 5:00AM. Passes can be provided for exhibitors, on a

# GENERAL RULES & REGULATIONS

2024

case by case basis, if they have a sick animal that may need checked throughout the night. Exhibitors must contact 4-H or FFA staff and Fair Management before they are given a pass.

- The fair board will take all precautions for the safekeeping of stock and other articles, but will NOT be responsible for any loss or damage that may occur. Exhibitors must give personal attention to their articles and at the end of fair, attend to their removal.
- Exhibits, excluding livestock, must remain in place until Sunday, July 28 at 8:00AM.
- Any 4-H or FFA animal shown at the fair must be owned by a Sublette County 4-H or Pinedale FFA member and entered in that name.
- Exhibitors or superintendents will not be allowed to influence the judging by comments or criticisms.
- Superintendents or show staff may create new classes if there is a demand.
- **No bicycles, scooters, hover boards, or similar items will be allowed in the buildings during fair.**
- **No dogs are allowed in any buildings during fair.**
- **No smoking is allowed in any building during fair.**
- **RV Spaces & Camping During Fair:** RV spaces will be offered for a \$100 fee. Those paying the fee will have the option to reserve a space and bring their camper to the

fairgrounds beginning Sunday, July 21. The fee must be paid during the online entry process and submitted with 4-H/FFA entries. After payment has cleared, you will be contacted via email with a map to reserve a space. Spaces will be assigned in the order payment was received. Any remaining spaces will be available on a first-come, first-served basis beginning Monday, July 22 at 8:00AM. No saving of spaces is allowed prior to this time. Spaces may only be saved with an RV. All campers must display a "camping permit" in the rear window or near the door of their camper. The permit must be able to be seen from outside the camper. No tents are allowed to utilize and RV hookup space. If you have a small RV, please be courteous and use one of the smaller spaces so those with larger RVs have room to park. Do not take up more than one space. There is an RV dump on site. There will be designated areas that fair staff will allow dry camping during fair, if all of the RV spaces are full or if you would prefer to dry camp. There is no charge for dry camping. By parking at the fairgrounds, you understand all of the rules and regulations and release the Sublette County Fair from all liability of any kind and character on account of loss, damage, or injury to this or any other property which may be at the fairgrounds.



# RIBBONS & PREMIUMS

2024

## RIBBONS

Most Sublette County Fair exhibits and animals are judged using the modified Danish judging system as outlined below:

- **Excellent (Purple):** A purple is given to those entries or members who most nearly meet the standards established for the particular class or level of performance. Excellent does not indicate perfection, but is a wide grouping indicating a high degree of achievement toward the elements in the standards for the exhibit.
- **Good (Blue):** A blue is given to those exhibits or individuals who rank good in relation to the particular standards or expected achievement of the class or contest. Either the general level of the accomplishment is less than excellent or enough specific shortcomings are found to cause the placing to drop from excellent to good.
- **Fair (Red):** A red is given to those exhibits or contestants who, upon evaluation, are found lacking and rate only average, acceptable, or satisfactory rating for the standards established.
- **Poor (White):** A white award may be given if exhibits or individuals who, for one reason or another, fail to produce that level of achievement which can be reasonably expected in relation to the specific class or performance in which they are entered.

In addition to the above awards, purple and lavender rosettes may be awarded. It is important to note that if the judge feels the quality of the project does not deserve a rosette, he /she does not have to award. For example, if there is only one entry in a division, that does not automatically qualify it for a purple rosette. In order to receive a rosette, the exhibit must have a purple ribbon. Blue, red, and white ribbon exhibits or animals do not qualify for grand or reserve ribbons or awards.

The 4-H horse and shooting sports projects are judged using a modified American judging system where placings are awarded. Exhibitors will receive 1st-6th place ribbons. Those not placing 1st-6th will receive an orange ribbon if they completed the class without disqualification. Those who did not successfully complete the class or those who disqualified will receive a white ribbon.

## PREMIUMS

Premiums are awards given in the form of cash to exhibitors. They are awarded to all exhibitors in 4-H/FFA and Open Class projects. The Sublette County Fair awards premiums on a basis of \$5 for a purple ribbon, \$3 for a blue ribbon, and \$2 for a red ribbon for most events. Horse show and shooting sports premiums will be awarded on a basis of \$5 for 1st-3rd place, \$3 for 4th-6th place, and \$2 for all other successful completions of a class. White ribbons are not eligible for premiums. Premiums will be available for pickup in the fair office on Saturday, July 27 and Sunday, July 28 from 8:00AM to 2:00PM. Any premiums not picked up during the specified times will be forfeited. Premiums will not be mailed for any reason. If you are unable to pick up your own premiums, please fill out the premium release below and return it to the fair office. Premiums will not be given to anyone other than the exhibitor or his/her parents/guardians without a signed release.

### 2024 Sublette County Fair Premium Release

I, \_\_\_\_\_, give permission to \_\_\_\_\_ to pick up my cash premium awards for the Sublette County Fair. I understand that if my premiums are not picked up between the hours of 8:00AM to 2:00PM on Saturday, July 27 or 8:00AM to 2:00PM on Sunday, July 28 they will be forfeited.

\_\_\_\_\_  
Exhibitor Name

\_\_\_\_\_  
Signature

\_\_\_\_\_  
Date



# OPEN CLASS STATIC EXHIBIT RULES

2024



- **Entry Deadline:** Open class static exhibit entries will be accepted online, following the link at [www.sublettecountyfair.com](http://www.sublettecountyfair.com), from July 5, 2024 through July 21, 2024. Entries will also be accepted in person from 8:00AM to 6:00PM on July 22. All entries must be dropped off at the Commercial Building on July 22 between the hours of 8:00AM and 6:00PM.
- **Exhibit Judging:** Open class entries will be judged on July 22 at 6:00PM. Exhibitors, and all other public, are not allowed to enter the building during the judging.
- **Exhibit Hanging:** Posters, pictures, artwork, and photography exhibits should come with a method for hanging them on hooks attached to pegboard. Sawtooth hangers will not work. No glass is allowed in any type of frame. Photography and art exhibits that do not hang properly will not be displayed and may be disqualified. Quilts do not need to have a sleeve for hanging.
- Any exhibit that puts the safety of others at risk of injury or harm, as deemed by the fair staff, may not be allowed to be publicly displayed and/or judged.
- Oversized exhibits will be displayed as space permits.
- Exhibits are placed as judged using the Danish system of recognition (purple, blue, red, white). Additional awards or recognition are available pending donor support.
- Awards will be given on merit only and will not receive a ribbon if deemed unworthy by the judges, though it may be the only one of its kind entered.
- There is no limit on the number of entries per exhibitor, but you may not enter something that has been entered in previous fairs.
- By submitting an entry, I understand all of the rules and regulations governing exhibits at the fair and release the Sublette County Fair from all liability of any kind and character on account of loss, damage, or injury to this or any other property which the undersigned may have at the fairgrounds.
- Premium awards will be paid in cash. You must pick up and sign for your own premiums. Premiums can be picked up in the midway fair office on July 27 and 28 from 8:00AM to 2:00PM. If your premiums are not claimed during these times, they will not be awarded. Premium payout will be \$5 for purple ribbons, \$3 for blue ribbons, and \$2 for red ribbons.
- **Exhibit Release:** All open class static exhibits will be released from 8:00AM to 2:00PM on Sunday, July 28. Exhibits will not be released early. Any exhibits not picked up will be thrown away or donated elsewhere.

# 4-H & FFA STATIC EXHIBIT RULES

2024

- **Entry Deadline:** All 4-H and FFA static exhibits must be entered by July 1, 2024 through Fair Entry.
- **Interview Judging:** All 4-H and FFA members bringing static exhibits to fair are encouraged to attend an interview with the judge to present what they learned. Interviews with judges are worth 60% of overall score on project. Interview judging will begin at 9:00AM on Friday, July 19, 2024. Each member will be designated a specific time to meet with the judge and as much as possible should adhere to that schedule. If a member is unable to attend interview judging they may still have their exhibit judged, but should make appropriate arrangements to have the item to the Commercial Building no later than 9:00AM on July 19.
- Due to the absence of interview judging at the state fair, the accompaniment of a brief explanation with your project may help the judge when assigning a ribbon placing. Points to consider may include: process, tools used, skills learned, goals achieved, and additional help from others.
- Because 4-H promotes a learning experience associated with project enrollment, entries are evaluated within the context of the division in which they are entered (i.e. entry in leathercraft is evaluated on leathercraft skills).
- **Exhibit Hanging:** Posters, pictures, artwork, and photography exhibits should come with a method for hanging them on hooks attached to pegboard. If the items cannot be hung, they will be displayed on the floor or table. No glass is allowed in any type of frame.
- **Display Boards:** Display boards or poster boards must be able to stand on their own on a table.
- Any exhibit that puts the safety of others at risk of injury or harm, as deemed by the 4-H Office, may not be allowed to be publicly displayed and/or judged.
- Oversized exhibits will be displayed as space permits.
- 4-H exhibits are placed as judged using the Danish system of recognition (purple, blue, red, white). Additional awards or recognition are available pending donor support.
- **Exhibits:** All non-livestock exhibits must be in place in the 4-H department by 9:00AM on July 19, 2024.
- **Exhibit Release:** All non-livestock exhibits will be released from 8:00AM to 2:00PM on Sunday, July 28. Exhibits will not be released early. Any exhibits not picked up will be thrown away or donated elsewhere.



# 4-H & FFA RULES

2024

- **Entry Submission:** All 4-H and FFA entries must be submitted online, following the link at [www.sublettecountyfair.com](http://www.sublettecountyfair.com) no later than 11:00PM on July 1, 2024. Youth needing assistance with the online entry system may receive help at either the fair office in Big Piney or the Extension Office in Pinedale. Late entries will be accepted for one week following the original entry deadline. All late entries must be approved by fair management and the submission of a \$100 fine per entry will be due at the time of submitting late entries.
- **Shooting Sports:** All shooting sports will follow the rules outlined in the Wyoming State 4-H Shooting Sports Rules & Regulations booklet, which can also be found following this link: [https://www.uwyo.edu/4-h/opportunities/state-contests/state-shoot/\\_files/2024-state-shoot-rules-and-regulations.pdf](https://www.uwyo.edu/4-h/opportunities/state-contests/state-shoot/_files/2024-state-shoot-rules-and-regulations.pdf).
- **Market Livestock Tagging & Ownership:** All youth entering market livestock in the Sublette County Fair must own and have that animal tagged with the WY State issued tag by the appropriate program (4-H/FFA) by the tagging/ownership deadline for that species (Beef: February 1, 2023) (Sheep, Goats, Swine: June 1, 2023). Youth are allowed to tag as many animals as they wish. All small livestock (sheep, goats, swine) are required to make a tagging day. The only exception is if there is a family emergency. The exhibitor does not have to be present but their animal must be at the tagging day or they will not be eligible to show at fair.
- **Floater Animals:** A "floater" animal may be tagged as a family animal with a listing of all children's names included with it. The family animal can be tagged for all children of the family as long as the animals are being raised together. The animal needs to be entered for show by the fair deadline. At weigh-in, the family can designate which child that animal is to be assigned to permanently. This animal is NOT eligible for state fair if tagged for all children. All other rules still apply to the family animal (i.e. tagging dates, weights, ownership deadline, etc.).
- **Scrapies ID:** All sheep and goats (including wethers) must be identified with approved USDA Scrapie identification which includes an official USDA Scrapie ear tag or legible tattoo accompanied by registry paperwork or a microchip with official veterinary application certification and reader.
- **Proof of Ownership:** Exhibitors must have proof of ownership (bill of sale or brand inspection) in the exhibitor's name prior to fair. Brand inspections are required for beef and sheep. A bill of sale is required for swine and goats. All brand inspections, bills of sale, and health inspections will be checked at the entrance of the fairgrounds by a local brand inspector.
- **Health Inspection:** Any livestock, including rabbits or chickens, and excluding horses, shown in the youth or open shows must have a veterinary health inspection within ten days of the respective animal check-in/arrival on the fairgrounds. If anyone sees an animal with questionable health issues, the animal may be quarantined on the grounds until examined by a vet. The owner of the animal may be subject to any vet fees. Lisa Jones, DVM will make the final decision regarding the health of all animals. The Fair Board, 4-H and FFA will not be responsible for any related expenses. The Fair Veterinarian shall make the final determination at any time during fair when an animal is deemed unfit to be on fairgrounds due to health issues. At such time a youth is informed that an animal must leave the fairgrounds, the fair veterinarian shall be accompanied by a Fair Board member and the FFA advisor and/or 4-H Extension Educator.
- **Companion / PeeWee Animals:** Prior to the fair entry deadline, 4-H and FFA members must contact the extension office if they want to bring a companion animal. Approval will be based upon justification of the need and space availability.



# 4-H & FFA RULES

2024



Wednesday, July 24, followed by sheep and goats. No sheep and goats will be allowed in the wash area until swine showmanship has begun. Market beef will begin weigh-in at 11:00AM.

- **Breeding Animals:** Breeding animals may come for show-day only, so long as the 4-H or FFA youth has contacted program leadership (4-H agent or FFA advisor), prior to the entry deadline.
- **Livestock Exhibit Check-In:** 4-H and FFA swine exhibits must be on the grounds by 9:00AM on Wednesday, July 24. All other 4-H and FFA livestock exhibits (excluding horses) must be on the grounds by 11:00AM Wednesday. Exhibitors violating this rule will not show or participate in the livestock sale. Exceptions are by emergency only. Decisions are made by at least five Livestock Committee members at weigh-in. The Livestock Committee consists of all active 4-H livestock leaders, a Fair Board member, the FFA Advisor, and the 4-H Extension Educator.
- **Weigh-In:** Market swine will begin weigh-in at 9:00AM on Wednesday, July 24, followed by sheep and goats. No sheep and goats will be allowed in the wash area until swine showmanship has begun. Market beef will begin weigh-in at 11:00AM.
- **Weigh Backs:** An animal may be weighed-back once, only if the minimum weight requirement is not met, immediately after weigh-in for that species has finished. If any contestant uses artificial means, such as drenching, to make an animal meet requirements, that individual will be barred from competing at the fair. Should an animal not make weight, the contestant will still be allowed to show in a feeder class at the fair, but not to sell.
- All exhibitors must show their own animal at both the Sublette County and the Wyoming State Fair. Only the exhibitor may be in the ring when showing their animal. If a youth has multiple animals within a class at either venue, then the youth may designate a Pinedale FFA or Sublette County 4-H youth to exhibit an animal for that class. Furthermore, any youth exhibiting livestock at either the Sublette County or the Wyoming State Fair must be the animal's primary caretaker for the entire duration of fair. All pens and surrounding areas must be cleaned and animals fed and watered on a daily basis by the exhibiting youth. Failure to do so will result in removal of the unattended animals from the fairgrounds. Decisions of removal are made by at least five Livestock Committee members.
- All animals will remain tied or penned in the buildings.
- If an exhibitor is not present for the last call into the ring, he/she will be denied entry into the class and will be scratched.
- It is recommended that there will be up to ten entries in a livestock class. Beyond ten entries, the entries will be broken such that there will be a minimum of five in each lot. If the class is divided by number, the division will be determined on scale order.
- Classes may be combined as needed, as decided by staff, superintendents, fair board, and program leadership. For the swine divisions, any division with less than five swine, will compete as AOB.
- Any livestock deemed uncontrollable by the superintendent in charge will be excused from showing on the fair-

# 4-H & FFA RULES

2024

grounds depending upon the severity of the situation.

- **Fitting Rule:** A 4-H or FFA member is expected to fit their own animal at fair. However, in the interest of safety and the educational mission of the 4-H and FFA programs, a 4-H/FFA member may be assisted by immediate family members, another Sublette County 4-H or Pinedale FFA member, the Pinedale FFA Advisor, or a Sublette County 4-H leader/4-H Educator. No professional fitters or outside help allowed. The exhibitor must be present during any fitting. Assistance is defined as a learning situation where the person assisting is teaching the 4-H/FFA member a technique in fitting or showing. They are only to show how; the member is expected to perform the majority of each technique and/or skill required. If there is a complaint or concern, it needs to be addressed before the show starts and taken to the superintendent of that species. If the Fair Committee decides there is a violation of this rule, it may result in the disqualification of the animal and the forfeit of premiums and awards. If a 4-H/FFA member is found to be in violation of the fitting rule, he/she will not be allowed to show in any 4-H or FFA division at fair, including the showmanship and Round Robin contests. The Fair Committee for each livestock division will be the livestock superintendent(s) for the species, a Fair Board representative, the FFA Advisor, and the 4-H Extension Educator.
- Animals used in showmanship must be owned and fit by the exhibitor.
- No bulls, boars, rams, or buck goats allowed in showmanship.
- There will be six classes of showmanship (they will show in the following order): Senior 4-H, Intermediate 4-H, Junior 4-H, First Year 4-H, FFA, and Peewee.
- Market steer, swine, lamb and goat classes will be determined by weight.
- There will be a feeder class for all underweight animals at fair. Those animals will not be eligible to sell in the Junior Livestock Sale, but they will be judged in the feeder class as prospect animals and receive ribbon placings as such.
- The same animal may not be shown in both breeding and market classes, they must be in one or the other.
- **State Fair Animals:** Exhibitors must declare animals des-

igned for state fair Friday, July 26 by 3:00PM.

- **Unsportsmanlike Conduct:** Unsportsmanlike conduct (i.e. inappropriate language / actions) by an exhibitor may be cause for immediate disqualification of the exhibitor from the show, at the judge's discretion. Unsportsmanlike conduct (i.e. inappropriate language / actions) by a parent, leader, or others may be cause for immediate removal of the person from the Sublette County Fairgrounds at the discretion of the Fair Board.
- **4-H Code of Conduct:**
  - Members should not use alcoholic beverages or other drugs at any 4-H function. Aspirin and other similar products and drugs prescribed by a physician are exceptions.
  - Violation by a member shall result in the loss of 4-H privileges for the remainder of the 4-H year, including exhibiting at the county fair, participating in the livestock sale, and attending the state fair.
  - Adult volunteer leaders should adhere to the same high standard expected of the members.
- **4-H Chaperoning Policy:**
  - Chaperones for county functions must be recognized 4-H leaders. A recognized leader is an individual who has successfully completed screening, leader training, and signed a 4-H Leader Agreement form (effective October 1 of the current year). Non-recognized 4-H leaders must not have unsupervised access to 4-H youth. This is particularly important for any overnight functions.



# JUNIOR LIVESTOCK SALE RULES

2024

- Access to the Junior Livestock Sale is a privilege, not a right.
- **Ownership:** Members must own the animal by the tagging/ownership deadline (February 1 for market beef and June 1 for sheep/goat/swine).
- **Youth Quality Assurance:** All 4-H and FFA members must have completed a Youth Quality Assurance Level 1 program their first year in a market livestock project. All members must complete an additional YQA each year until all three levels have been completed. Starting in 2024, 4-H parent attendance is mandatory with the 4-H member at each level of YQA. The deadline to complete this YQA requirement is April 1.
- **Meeting Attendance:** There will be at least six meetings for a 4-H project member, of which the member must attend at least three. This attendance will be certified by leaders.
- **Seller's Agreement:** The signed seller's agreement must be returned to the Extension Office no later than July 1, 2024. Late agreements may be accepted until July 8, 2024 for a \$100 fee per agreement.
- Market animals must have been grain fed. "Grass fat" animals will not be allowed participation in this premium market animal sale.
- **Private Treaty:** Youth are not allowed to advertise private treaty animals at the fair. The Sale Association will bear no responsibility for private treaty animals; sales, transportation etc.
- Consignors must have shown the animal in the Junior Market Livestock Show at the Sublette County Fair to be eligible for the sale. Consignors must be present the day of the sale unless there are extenuating circumstances in which the Sale Association will decide and vote on participation.
- **Weight Requirements:** Market beef over 1050 pounds, market lambs over 90 pounds, market swine over 230 pounds, and market goats over 60 pounds are eligible for sale. Smaller framed market beef that do not weigh 1050 pounds may also gain eligibility to the sale using the following formula:  $\text{measured hip height} \times 22.5 = \text{minimum accepted market weight} \times .97$  (3% allowance for weight loss due to stress) = minimum accepted weight. Market swine over 315 pounds may sell in the Junior Livestock Sale, only if the youth agrees to be paid only on 315 pounds.
- The Fair Veterinarian shall make the final determination at any time during fair when an animal is deemed unfit to be on fairgrounds due to health issues. At such time a youth is informed that an animal must leave the fairgrounds, the fair veterinarian shall be accompanied by a Fair Board member and the FFA advisor and/or 4-H Extension Educator. The judge will also have the prerogative to declare an animal unfit for participation in the sale by awarding a white ribbon. All judges are clearly instructed that animals awarded white ribbons will not be allowed to consign in the Junior Livestock Sale.
- Consignors may pick and choose which animal they will sell. There is no requirement to sell champions. A member may sell two animals of the same species if they have the Grand and Reserve Champion animal in that species. A member with a Grand Champion animal may sell a second animal of another species in addition to their Grand Champion animal. No member may sell more than two animals under any situation in any given year.
- **Sale Animal Declaration:** Exhibitors must declare sale animals as well as animals destined for state fair by Friday, July 26 at 3:00PM prior to the sale.
- Once sold, the animal belongs to the buyer. Sale suggests consignor accommodate buyer's needs.
- **Slaughter Transportation:** If a consignor does not have the animal present when animals are scheduled to be transported to slaughter the consignor is agreeing to assume all further responsibility for the animal including slaughter and delivery of product to the buyer. Consignors of pre-designated 4-H or FFA state fair delegate animals that sell in the sale assume responsibility for the animal including slaughter and delivery of the product to the buyer.
- **Slaughter Transportation:** All swine, sheep and goats sold through the Junior Livestock Sale will be left on fairgrounds property and hauled to slaughter after the sale unless other arrangements have been made with the buyer or they are participating in state fair. Any other animals of these species must be removed from the livestock barn by 10:00PM the day of the sale. For all market beef sold

# JUNIOR LIVESTOCK SALE RULES

2024

through the sale, the consignor agrees to follow instructions given prior to fair which may include taking the animals home until a designated date and keeping them on current grain rations until the animal arrives at the designated location for pick up.

- Poultry are sold as a pen of three.
- All rabbit and poultry consignors are responsible for slaughter and delivery to their buyer.
- **Buyer Payment:** The Sale Association encourages buyers to make payment on sale day and will send invoices within the week.
- The Sale Association may assess late payment charges on outstanding accounts (18% APR).
- **Issuance of Checks:** Checks will not be issued to participants until all buyers have paid the Sale Association. Mem-

bers will not receive their checks until they have submitted a handwritten "Thank You" to all of their buyers (sale and add-ons). 4-H members must submit proof of a thank you to their main buyer to the Extension Office no later than August 26, 2024. Proof can be a photo of the thank you card or a copy of the thank-you card. FFA members will receive their sale checks from the FFA Advisor once all FFA requirements are completed. For those members that run "thank you" ads in the newspaper, a handwritten "thank you" note written to your buyer must still be provided. Newspaper "thank-you" ads are not required.

- **Commission:** There will be a 3% commission retained by the Sale Association on the sale price & add-ons.
- The Sale Association will pay brand inspection fees



Sublette County Fair

# JUNIOR LIVESTOCK SALE PURCHASERS

2023

## Purchasers

Angry Irish Repair  
Brian & Annie Espenscheid  
C Roberts Trucking LLC  
Carney Construction  
Chrisman Land Co.  
Circle 9 Ranch - Boulder  
Cowboy Shop  
Cowboy State Capital LLC  
Dave's Asphalt Company  
Double C Industries LLC  
Espenscheid Enterprises  
Fish Creek Flying W Ranches  
Frank Fear Cattle Company  
Get Western Electric LLC  
GPO Operations  
Gypsy Treats LLC  
Helm's Handy Helpers LLC  
HF Ranch  
Hindsite, Inc  
I & J Builders, LLC  
Jackson Fork Ranch  
James Gang Inc  
JB'S Welding  
Jensen Angus  
Jensen Trucking  
John C. Budd Ranches  
Jonah Energy  
JRLC, LLC  
Keyhole Technologies  
Koch Construction, Inc.  
Legend Hydrovac  
Lucky 7 Angus  
M&M Disposal  
Milleg Partnership  
Mountain States Pressure  
Service Inc  
Mountain States Water Svc

Northstar Corp  
O Bar Y Ranch  
Performance Tech  
Pinedale Auto Supply - Napa  
Auto Parts  
Pinedale Lumber  
Pure West Energy  
Rio Verde Engineering  
Riverside Livestock LLC  
Riverside Vet  
Rob & Melva Post  
Rocky Mountain Powersports  
S Heart Ranch  
Saunders Ranch Company  
Saunders Rentals LLC  
SCR Wyoming, Inc  
Shawn & Katie Robertson  
Shelli Williams  
Sommers Ranch  
SOS Well Services, Inc.  
Storman Norman Ranch  
Swain Equipment  
Swain Family  
Tara Bolgiano Realtor  
Titan Construction  
Town of Marbleton  
TY Ranch LLC  
Valley Landscape Service  
Walkers Agri-Service  
Western Veterinary Service  
White Mountain Operating  
Wyoming Concepts  
Y2 Consultants

## Add-On Supporters

Abbey Smith  
All American Fuel  
Allen & Sharlene Budge  
Allen Odom  
Anonymous  
B1T Ranch LLC  
Baked & Wired  
Bar Cross Ranch  
Barney Ranches  
Betty Fear  
Brent & Kristi Hibbert  
Casey & Amy Knotts  
Cinch Wireline  
Circle 9 Ranch - Boulder  
Claude & Sissy Walker  
Dalton Lantz  
DD Ford Construction  
Diamond G Dental  
Doug Tucker  
Ella Vinson  
GC Drywall  
Get Western Electric LLC  
Greg and Robin Schamber  
Heap Enterprises  
Heather Keiter  
HF Ranch  
Jerry & Bonnie Shoup  
JRLC, LLC  
Justin & Linda Roberts  
Keyhole Technologies  
Kimberlee Jansen  
Lakeside Lodge  
Linda Lund  
Lori King  
Lynn and Kathy Nebeker  
Marilyn Huffman  
Mark & Jill Randall  
Mary Kay Jensen Living Trust  
Matosky Family  
Mergl Brothers Livestock  
Mosquito Creek Ranch  
MPLX - Marathon Petroleum  
Company - Mark West  
Nancy Espenscheid  
Riverbend Ranch  
Rob & Melva Post  
Rogers Feed  
Saunders Ranch Company  
Shelli Williams  
Slavin Livestock  
Swain Family  
Terrie & Bob Springman  
Tibbitts family  
TY Ranch LLC  
Weber Drilling  
Windbigler Transport LLC  
Wyo Peak Electric  
Y2 Consultants

2024 Junior Livestock Sale

Saturday, July 27

1:30 PM - Event Center



# ULTRASOUND CONTEST RULES & INFO

2024

- The Livestock Ultrasound Contest is sponsored and supported by the Sublette County Fair Board.
- Pre-entries for this contest are not required. There will be a station set-up in the weigh-in area for each specie to have 4-H and FFA animals ultrasounded.
- Results from the Ultrasound Contest will not be made available until all shows are finished. The results will be available before the Junior Livestock Sale.
- Belt buckles will be awarded to the best animal of each specie that has the best carcass, as ultrasounded, graded, and chosen by Southeast Idaho Ultrasound.
- The champions are picked based on percent fat free lean for hogs, percent retail product for lambs and goats, and retail yield plus percent intramuscular fat for beef. Animals must meet all of the following criteria in order to be eligible to win the contest.

## Goats: Percent Retail Product

- Weight: 60 pounds minimum

## Lambs: Percent Retail Product

- Retail product is based on backfat and ribeye area with a deduction for lambs with less than .15" backfat.
- Weight: 120 to 150
- Backfat: .15" to .25"
- Ribeye Area: >3.0 sq. in.

## Hogs: % Fat Free Lean

- Fat free lean is based on backfat, loin eye area, and weight, plus an adjustment based on if they are a barrow or gilt. There is another adjustment to penalize hogs with backfat of less than .60:.
- Weight: 240 to 290
- Adjusted Backfat: .60" to 1"
- Adjusted Loin Eye Area: >6.5 sq. in.
- All adjustments are based on 250 pounds.

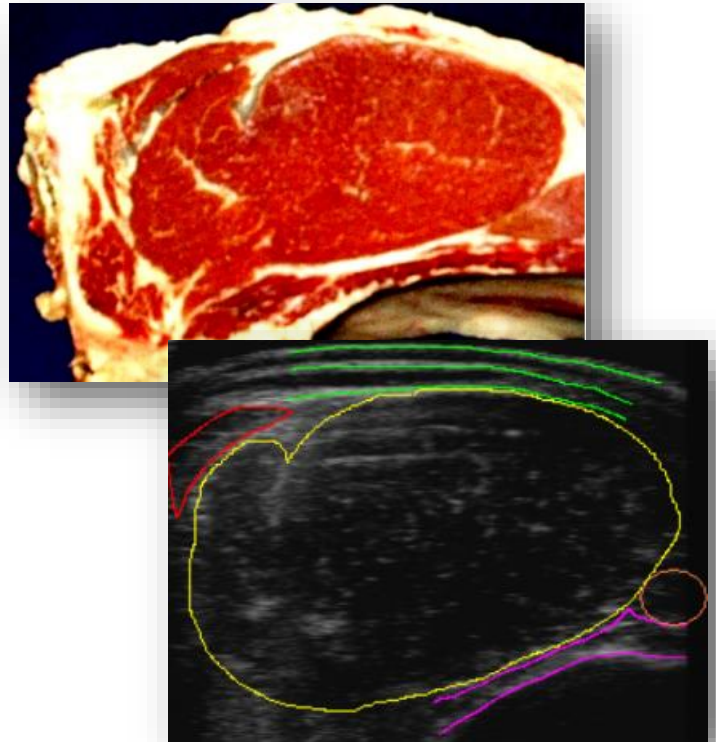
## Beef: Retail Yield Plus % Intramuscular Fat

- Retail yield is based on backfat and ribeye area.
- Weight: 1150 to 1425
- Backfat: <.60"
- Ribeye Area: 1.0 sq. in / 100 Pounds
- IMF %: >4.75%

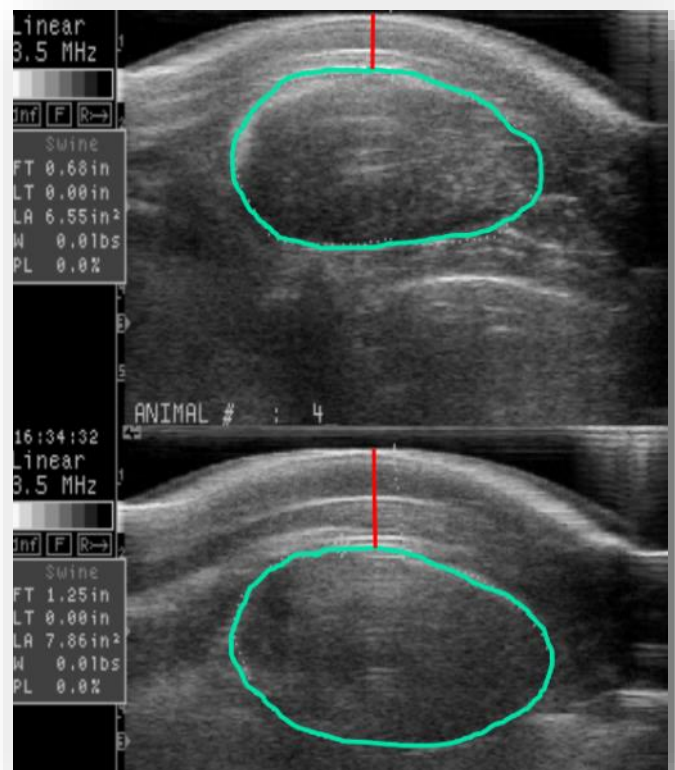
For more information, scan the QR code:



Below is an image of a beef ribeye versus the ultrasound image.



A comparison of two hog ultrasounds are shown here.



# JUNIOR HORSE SHOW RULES

2024

## Section 1: General Information

- The junior equine show is limited to 4-H and FFA members.
- **Show Dates:** The junior equine show will be held Monday, July 22 at 8:30AM and Tuesday, July 23 at 8:00AM.
- **Check-In:** Check-in will be from 6:45AM - 7:30AM each day. All contestants must be checked in both days of the horse show no later than one hour prior to the start of their first class.
- **Scratching Classes:** If you decide to scratch a class, it is your responsibility to tell the show secretary.
- **Entry Deadline:** All junior horse show entries must be made online following the link at [www.sublettecountyfair.com](http://www.sublettecountyfair.com) no later than July 1, 2024 at 11:00PM. If you do not have access to a computer with internet, entries may be made online by visiting the fair office or the Sublette County Extension Office in person and someone will assist you.
- **Age Groups:** Be sure to enter the correct age group. The age groups are the following: FFA, Senior 4-H (14-18), Intermediate 4-H (11-13), Junior 4-H (8-10), First Year (8-10), and Leadline (Under 8).
- **Vaccinations:** Vaccinations are strongly recommended to be current before arriving at the Sublette County Fair. Recommended vaccinations include: West Nile Virus, EWT, Rhino, Influenza, and Potomac Horse Fever. It is recommended that you consult with your veterinarian or animal health supplier to determine your vaccination program.

## Section 2: Policies

- The show will be run according to the current Sublette County Fair Book and 4-H Equine Competition Guide.
- Exhibitor is responsible for the accuracy of the entry. Errors can constitute an ineligible entry.
- Any horse suspected of ill health may be dismissed from the fairgrounds with veterinarian recommendation.
- Wearing of equestrian helmets is strongly encouraged.
- In the interest of safety, an exhibitor's horse may be saddled, bridled, and tack change made by someone other than the exhibitor. When an exhibitor needs assistance, a parent, 4-H leader, FFA advisor, junior leader, and/or friend is encouraged to provide that assistance and coaching prior to entering the arena.

- Absolutely no mistreatment of animals will be tolerated.
- Contestants and other persons may approach the judge with questions at the conclusion of the show each day.

## Section 3: Rules

- **Horse Certifications:** 4-H exhibitors must have a Horse Safety Certification filed in the county extension office as of July 1, 2024 and FFA exhibitors must have a Horse Safety Certification filed in the FFA office as of July 1, 2024 for any horse to be eligible for the Sublette County Fair. Members must be safety certified on any horse they enter and for every event they enter with that horse. In the event a member is unable to show the horse they have entered, a horse substitution may be made on show day provided the member is safety certified on that horse and the member's leader and /or veterinarian confirms the entered horse is unable to be shown for health reasons.
- **Last Call:** If an exhibitor is not present for the last call into the arena, he/she will be denied entry into the class.
- **Show Attire:** All 4-H exhibitors will wear black or blue jeans, a long-sleeved western shirt with a collar, and a western hat or helmet for western classes and English attire for English riding classes. FFA members must be in official dress.
- **Unsportsmanlike Conduct:** Unsportsmanlike conduct (i.e. inappropriate language/actions) by an exhibitor may be cause for immediate disqualification of the exhibitor from the show, at the judge's discretion. Unsportsmanlike conduct (i.e. inappropriate language/actions) by a parent, leader, or others may be cause for immediate removal of the person from the Sublette County Fairgrounds at the discretion of the Fair Board.
- **# of Horses / Class:** Exhibitors are limited to two horses per class (showmanship, equitation classes, hunter under saddle, hunter hack, western pleasure, and working cow are limited to one horse per exhibitor).
- **First Year Showmanship:** This is for exhibitors in their first year of the horse project, and eight, nine, or ten years old. Participants who enter the first year showmanship class are not eligible to become state fair delegates. If a first year member wishes to compete for a chance to be the state fair delegate, they must enter the junior showman-

# JUNIOR HORSE SHOW RULES

2024

ship division. The exhibitor may NOT enter both classes.

- An exhibitor must be in either the Junior age group or First Year / Walk-Trot. They cannot exhibit in both.
- **Cattle Classes:** All cattle classes are open to all youth who have passed the safety endorsement test. There will be a separate "cattle class" certification required for youth entering these classes. The 4-H program will provide at least one opportunity for youth to attend a certification event with cattle. Members entering cattle classes that are not certified will be scratched from the classes by show staff. All entrants in stock classes will pay a \$40 cattle and/or \$5 goat stock charge. Stock fees MUST be paid and will NOT be refunded if exhibitor scratches the class.
- **Exhibitor Numbers:** Each exhibitor/horse combination will be assigned exhibit numbers by the horse show secretary. The exhibitor is required to display the correct number when showing.
- **Partners:** For classes requiring a partner, the entrants partner must be listed on the entry, otherwise entrants will be removed from the class. Participants MUST be entered with a partner of the same age group or they will receive NO points towards all-around.
- **Team Events:** Contestants may enter the team events twice, but with different partners.
- **Stalls:** There are stalls available for overnight use if needed. All reservations for overnight stalls must be made through the fairgrounds office. Please contact Brianne Brower at 307- 276-5373 to reserve a stall.
- **All-Around Awards:** There will be All-Around awards given in each age division. The first year showmanship class, halter classes, Western Pleasure, and Hunter Under Saddle will not count towards All-Around. Only one showmanship class (4-H or FFA) will count towards All-Around, the highest points will be counted. All-Around will be awarded based on a horse / rider combination. Points from Horse A and Horse B will not be added together for the exhibitor. A DQ or no time, will not be awarded any points. Showmanship will be used as a tie-breaker for All-Around, should it be necessary.

- The point system for calculating the All-Around awards is as follows:

Place —>	1	2	3	4	5	6
6+ Horses	6	5	4	3	2	1
5 Horses	5	4	3	2	1	
4 Horses	4	3	2	1		
3 Horses	3	2	1			
2 Horses	2	1				
1 Horse	1					

## Junior Horse Show Approximate Schedule

- This schedule is approximate and is intended to give participants an estimate of when classes will be run.
- Unless otherwise states on the program, the order of the classes will be Senior 4-H, Intermediate 4-H, Junior 4-H, First Year 4-H, FFA.

### Age Groups

FFA, Senior 4-H (14-18), Intermediate 4-H (11-13), Junior 4-H (8-10), First Year (8-10), Walk-Trot (8-10\*\*), Leadline (Under 8)

### Monday

Halter (Ag Center — Main Arena)

Showmanship

FFA, Senior, Intermediate (Ag Center — Main Arena)

Junior, First Year (Ag Center — South Arena)

Western Equitation (Ag Center — Main Arena)\*\*

Western Pleasure (Ag Center — Main Arena)\*\*

Trail (Outdoor Arena)

Western Riding (Outdoor Arena)

Reining (Ag Center — Main Arena)

Leadline (Ag Center — Main Arena)

Programmed Ride (Ag Center — South Arena)

English Equitation (Ag Center — Main Arena)\*\*

Hunter Under Saddle (Ag Center — Main Arena)

Hunter Hack (Ag Center — Main Arena)

### Tuesday

Ranch Sorting (Ag Center — Main Arena)

Working Cow Horse (Ag Center — Main Arena)

Ranch Riding (Ag Center — Main Arena)

Barrels (Ag Center — Main Arena)

Poles (Ag Center — Main Arena)

Goat Tying (Ag Center — Main Arena)

# JUNIOR CAT & DOG SHOW RULES

2024

## CAT SHOW RULES

- The “household pet” cat is of mixed breed or unknown decent.
- A purebred cat is one belonging to a recognized breed with characteristics maintained through generations of unmixed descent; may be registered with a recognized registry.
- **Age Requirements:** Kittens must be at least four months old and not older than eight months of age. Adult cats are older than eight months of age. Because of susceptibility to disease, no kitten under four months of age will be accepted for competition.
- No pregnant or nursing cats may be entered.
- **Claws:** All cats and kittens must have their claws clipped. Declawed cats may enter the show and will not be counted down for declawing.
- Do not enter your cat if you feel it will not be easily handled by the judge.
- **Harness or Collar:** Each cat or kitten must be wearing a harness or collar (not a safety collar) and a leash. The exhibitor must always wear the leash on their wrist for safety reasons.
- **Carpet Squares & Cages/Carriers:** Exhibitors must furnish their own carpet square during judging. Exhibitors must provide a proper cage or carrier for their cats / kittens. Exhibitors must bring their own litter and litter box.
- **Show Attire:** All exhibitors should wear long sleeve shirts or blouses with trousers or skirts. No shorts.
- **Vaccinations:** Cats must have current rabies and distemper shots. It is strongly suggested, but not mandatory, that all entries have the combination vaccinations, plus feline leukemia. Vaccinations should not be received within three weeks prior to the show.
- **Cat Health:** Cats found to be ill or with parasites (fleas, ear mites, etc.) will not be allowed to show and will be dismissed from the grounds.
- **Cat Health:** No cat or kitten may enter the show if there is any (feline) infectious or contagious disease in the household within three weeks prior to the show date.

## DOG SHOW GENERAL RULES

- **Age Requirements:** All dogs must be at least six months of

age by May 1 to compete at the 4-H Dog Show and one year of age by May 1 for agility classes.

- **Dog ID Forms:** Youth should have a copy of their 4-H Dog ID form submitted by May 1 to the Extension Office.
- **Leashes:** All dogs must be on leash (excluding competition) and under control at all times. Dogs must not be taken in areas where livestock are unloading.
- **Vicious Dogs:** Vicious dogs will be dismissed from the ring and must be removed from the premises.
- Females in season will be allowed in classes. However, they will go through at the end of all classes.
- Spayed, monorchid, and neutered dogs may be shown without judging discrimination.
- Dogs must be clean and well groomed.
- The show committee reserves the right to ask anyone violating these rules to leave.
- No class will be held up for a contestant in a different show.
- **Jump Height Cards:** Entries for rally and agility classes will need a current Wyoming 4-H Jump Height card at check-in to verify correct class entries.

## DOG SHOW OBEDIENCE RULES

- **Entries:** A 4-H member may compete in only one obedience class per dog, with a total maximum of two entries (dogs). Their first dog is referred to as the “A” dog. The other is referred to as the “B” dog for class entries.
- The first-year beginner novice class is for members who are in their first year of the dog project, not the first year with a new dog. It is designed as a training class for members who do not feel competent to start in the On Leash class. Members may compete in the first year class only once.
- An exhibitor who competes in the A groups with their first dog stays in the A groups with that dog for each level. The same is true for the B groups and levels. A member advances from On Leash A to Novice A. Same applies for moving in B classes.
- A 4-H exhibitor with a dog shown previously in obedience classes by another 4-H member or a dog that has a title from another organization or has at least three qualifying

# JUNIOR CAT & DOG SHOW RULES

2024

scores from the designated annual county 4-H show must show the dog by these guidelines: o Junior and Intermediate age exhibitors may move back or down one level o Senior age exhibitors must show the dog at the highest level the dog has achieved.

- **Qualifying Scores:** A dog receiving a qualifying score of at least 170 points at the designated annual county 4-H show may advance the following year to the next higher class but must advance after receiving 3 qualifying scores from the designated annual county 4-H show. Once the higher level of obedience is selected for the dog, the member may not drop back to the lower level with the same dog.
- High in trial will be calculated on the basis of the raw qualifying score plus five additional points with each increase in level of difficulty.
- **Score Sheets:** The Wyoming 4-H dog score sheets were designed for the benefit of 4-H members. They are intended as guides for judges. Judges use their discretion in deciding the seriousness of errors.
- **Leashes:** All dogs must enter and leave the show ring and compete with a leash.
- Bait and/or toys are not allowed in the obedience competition.
- Dogs soiling or urinating in the ring during judging will be disqualified and receive no score.
- Males and females will be shown in the same class. Females in heat will be shown last in the class and must be kept away from the obedience ring until call time.

## DOG SHOW CONFORMATION RULES

- **Leashes:** All dogs must enter and leave the ring on a leash.
- Classes will be subdivided by breeds within a class, if numbers warrant. First place winners in classes 012- 021 will compete for the Best in Show award in conformation.
- Exhibitors entering more than one dog in any class may be assisted only by another 4-H member (from the same county, if possible), if the dogs must be shown at the same time.
- Classes 012-019 will be judged according to AKC standards, but it is not necessary that dogs be registered; they must be purebred - both animal parents of the same breed.

- Classes 020 and 021 are for cross-bred dogs (parents of different breeds) and will be judged according to the predominant breed characteristics and/or soundness, gait, condition, and grooming.
- Before entering your dog, check the list of breeds that are eligible for each group. It can be found online at <http://Wyoming4H.org> under the dog projects tab.

## DOG SHOW AGILITY RULES

- **Age Requirements:** Dogs must be at least one year of age by May 1, 2024.
- State entrants must achieve qualifying scores at their county level before competing in the State 4-H Dog Show. The level at which a member qualifies at the county level is the level in which they will compete at the State 4-H Dog Show.
- **Qualifying Scores:** A dog receiving a qualifying score of at least 75 points at county 4-H show may advance the following year to the next higher class but must advance after receiving 3 qualifying scores from the designated county 4-H show. Once the higher level in agility is selected for the dog, the member may not drop back to the lower level with the same dog.
- Youth, with a dog shown in previous years by another 4-H member or a dog that has a standard agility title from another organization, or has received three qualifying scores from the designated annual county 4-H show, must show the dog under these guidelines:
  - Junior and Intermediate aged 4-H youth may move "back" or "down" one level.
  - Senior aged 4-H youth must show the dog at the highest level that the dog has achieved.
- All dogs must enter and leave the ring on a leash.
- Level 1: Dogs will run on a leash six foot in length.
- Level 2: Dogs must run off leash or with a tab no longer than six inches. Collars must be of a flat, buckle variety with nothing hanging from it such as tags.
- Bait is not allowed in agility competition.
- Dogs in season will run at the end of each class.
- A time for all handlers (only) to familiarize themselves with the course they are competing in will be established and

# JUNIOR CAT & DOG SHOW RULES

2024

announced.

- Fastest times will be used to break ties on scores at all levels.

## Jump Height Table

Dog Height	Jump	Tire Jump	Pause Table	Broad Jump
Under 10"	4"	4"	8"	1 Board
10" — Under 15"	8"	4"	8"	2 Boards
15" — Under 20"	12"	8"	16"	3 Boards
20" & Over	16"	12"	16"	3 Boards

## DOG SHOW RALLY RULES

- Eligible entries are identified and entered by each county 4-H educator.
- A dog can be entered in only one rally class.
- A dog must advance levels after receiving three qualifying scores except for the (RAE). Once a level is selected for the dog, the members may not drop to a lower level. RAE class in indefinitely.
- Dogs soiling in the ring will be disqualified.
- **Leashes:** All dogs must enter and leave the ring on leash. Those competing in on leash classes should do so with a 6-foot leash.
- Collars may be flat buckle (leather or nylon) or choke chains.
- No bait (dog treats or toys) is allowed in the ring.
- **Rally Advanced Excellent (RAE) Class Only:** Participation ribbons will be given in the advanced and excellent classes regardless of qualifying score. If qualifying scores are received in both classes, then placement ribbons will be given.
- Classes are based on the age of the youth and the experience of the dog.
  - Novice Dog: A dog competing which has not obtained three qualifying scores from competitions nor has a rally title from another organization.
  - Pre-Advanced Dog: A dog which has received three scores as a novice dog, but has not earned a qualifying score as an advanced dog.
  - Advanced Dog: A dog which has received three qualifying scores from competitions, received a score of at

least 70 points in a novice dog class, or that has a rally title from another organization.

- Excellent Dog: A dog which has received three qualifying scores from competitions, received a score of at least 70 points in an advanced dog class, or that has a rally title from another organization.
- Rally Advanced Excellent: After receiving three qualifying scores from competitions, the handler and dog move up to this level. At this level, the handler and dog will compete in both advanced dog and excellent dog classes at the same show. The handler and dog must earn a qualifying score of 70 in each of the classes (advanced and excellent) to earn ribbons or prizes. Handler and dog may show at this level indefinitely.



# JUNIOR POULTRY & RABBIT RULES

2024

## POULTRY RULES

- **Check-In:** All poultry must check-in by 9:00AM.
- **Health Inspections:** Any sick or diseased animals may not be allowed on ground and / or be disqualified and must be removed from the grounds immediately.
- Individual birds entered in trios or fryer pens will not be permitted to compete for individual prizes or compete as part of another trio or fryer pen.
- **Ownership Requirements:** All birds must be owned by the exhibitor by June 1, 2024 to be eligible to show. If less than three birds are entered in a class, they will be combined with a similar class as determined by show management.

## RABBIT RULES

- If an animal is shown in a fur class, it must also have been shown in its respective breed class. Animals disqualified for reasons other than health may still show in the fur class. Fryer fur animals should be shown out of a meat pen only.
- Rabbit identification sometimes slows down the show. To speed up that process, exhibitors are asked to have all rabbits tattooed in the left ear. Please record tattoo number on the coop card.
- Current classes and varieties are the result of trends over the years. Additions and deletions are made each year based upon the trends shown by coop card numbers.
- All wool breed rabbits are shown together and will be separated into two groups, white and colored. Breeds for the wool classes are English Angora, French Angora, Satin Angora, Giant Angora, American Fuzzy Lop, and Jersey Wooly.



# 4-H ROUND ROBIN RULES & INFO

2024

- The Round Robin Showmanship contest is an avenue for 4-H members to learn about other species of livestock. Each Round Robin Showman will not only be judged on the fitting and showing of their own animal, but also on their abilities in showing other species of livestock.
- Belt buckles will be awarded to the Grand and Reserve Champion Round Robin Senior Showmen. A certificate for an embroidered jacket will be awarded to the Grand and Reserve Champion Round Robin Intermediate Showmen.
- The Sublette County Junior Livestock Sale Association will award a \$200 scholarship to the winner of the Senior Round Robin contest and a \$100 award to the Reserve Champion. The scholarship will be paid out after the fair of the youth's senior year and is to be used towards furthering their education with any post-secondary training.
- The senior contest is open to senior 4-H members (14-18) who qualified in their respective showmanship contests: beef, lamb, swine, horse, and goat. The intermediate contest is open to intermediate 4-H members (11-13) who qualified in their respective showmanship contests: beef, lamb, swine, horse, and goat.
- Eligible contestants will be contacted after qualifying with any details on time, locations, and any additional information.
- The intermediate contest is not a 4-H supported event, therefore the 4-H program accepts no liability for the contest.
- The top two senior and intermediate showmen (4-H, grand champion and reserve champion) from the following livestock showmanship contests: beef, swine, horse, sheep, and goat, will be eligible to compete in the round robin. Contestants must fit their own animals.
- In the event a member qualifies in more than one contest, he will compete in the round robin with the first animal he/she qualified with, allowing the second-place contestant in the second contest to move up.
- Members must show the same animal they exhibited in the original division showmanship contest. Members must also fit their own animal.
- There will be one judge for each species. The judges will score each contestant up to ten points for fitting of their own animal; these points will be used only for tie-breaking.
- The contestants will be showing each species of animal for five minutes. The judges will give up to ten points.
- Contestants must qualify in their contest in order to compete in the round robin. Also, judges will be picked prior to the fair and scorecards will be made.
- Contestants must provide their own animal holder to stay with the animal while contestants are moving to different species.





Sublette County Fair  
**4-H/FFA CLASSES**  
2024

## CATTLE

Superintendents: *Coke Landers & Jana Hughes*

### Division 1501: Market Beef

#### Classes

- 001: Market Steer
- 002: Market Heifer
- 003: Feeder Beef (Under 1050 Pounds)

### Division 1502: Breeding Beef

#### Classes

- 001: Commercial Heifer
- 002: Registered Heifer
- 003: Cow / Calf Pair (First Calf Heifer)
- 004: Aged Cow Pair

### Division 1503: Dairy Cattle

#### Classes

- 001: Dairy Cattle

### Division 1504: Beef Showmanship

#### Classes

- 001: Senior 4-H (14-18)
- 002: Intermediate 4-H (11-13)
- 003: Junior 4-H (8-10)
- 004: First Year 4-H (8-10)
- 005: FFA
- 006: PeeWee (Under 8)

## SWINE

Superintendents: *Mark Randall & Dru Rogers*

### Division 1505: Market Swine

View the classification guide at [www.sublettecountyfair.com](http://www.sublettecountyfair.com) for more information.

#### Classes

- 001: Berkshire
- 002: Chester White
- 003: Duroc
- 004: Hampshire
- 005: Landrace
- 006: Poland China
- 007: Spotted
- 008: Yorkshire

009: Dark Crossbred

010: Light Crossbred

011: AOB Dark

012: AOB Light

013: Feeder Swine (Under 230 Pounds)

### Division 1506: Breeding Swine

#### Classes

- 001: Boar
- 002: Gilt

### Division 1507: Swine Showmanship

#### Classes

- 001: Senior 4-H (14-18)
- 002: Intermediate 4-H (11-13)
- 003: Junior 4-H (8-10)
- 004: First Year 4-H (8-10)
- 005: FFA
- 006: PeeWee (Under 8)

## SHEEP

Superintendents: *Alivia Patterson & Clay Olson*

### Division 1508: Breeding Sheep

#### Classes

- 001: Ram (1 Year Old & Under 2 Years)
- 002: Fall Ram Lamb (Born 9/1/23—12/31/23)
- 003: Winter Ram Lamb (Born 1/1/24—2/15/24)
- 004: Spring Ram Lamb (Born 2/16/24—6/1/24)
- 005: Ewe (1 Year Old & Under 2 Years)
- 006: Fall Ewe Lamb (Born 9/1/23—12/31/23)
- 007: Winter Ewe Lamb (Born 1/1/24—2/15/24)
- 008: Spring Ewe Lamb (Born 2/16/24—6/1/24)

### Division 1509: Market Lambs

#### Classes

- 001: Market Lamb (Black Face)
- 002: Market Lamb (White Face)
- 003: Market Lamb (Speckle Face)
- 004: Market Lamb (Natural)
- 005: Feeder Lamb (Under 90 Pounds)

### Division 1510: Sheep Showmanship

#### Classes

- 001: Senior 4-H (14-18)

Sublette County Fair

# 4-H/FFA CLASSES

2024

- 002: Intermediate 4-H (11-13)
- 003: Junior 4-H (8-10)
- 004: First Year 4-H (8-10)
- 005: FFA
- 006: PeeWee (Under 8)

## GOATS

Superintendent: Phil Mergl

### Division 1511: Goats

#### Classes

- 001: Market Goat
- 002: Dairy Goat
- 003: Feeder Goat (Under 60 Pounds)
- 004: Breeding Goat
- 005: Breeding Fiber Goat

### Division 1512: Goat Showmanship

#### Classes

- 001: Senior 4-H (14-18)
- 002: Intermediate 4-H (11-13)
- 003: Junior 4-H (8-10)
- 004: First Year 4-H (8-10)
- 005: FFA
- 006: PeeWee (Under 8)

## EQUINE/HORSE

### Division 1513: Horse Show

#### Classes

##### *Halter*

- 001: Mares 3 & Under
- 002: Mares 4 & Over
- 003: Geldings 3 & Under
- 004: Geldings 4 & Over

##### *Showmanship*

- 005: Senior 4-H (14-18)
- 006: Intermediate 4-H (11-13)
- 007: Junior 4-H (8-10)
- 008: First Year 4-H (8-10)
- 009: FFA

##### *Western Equitation*

- 010: PeeWee (Under 8)
- 011: Senior 4-H & FFA
- 012: Intermediate 4-H
- 013: Junior 4-H

##### *Western Pleasure*

- 014: Walk-Trot
- 015: Senior 4-H & FFA
- 016: Intermediate 4-H
- 017: Junior 4-H



Sublette County Fair

# 4-H/FFA CLASSES

2024

*Trail*

- 018: Senior 4-H & FFA
- 019: Intermediate 4-H
- 020: Junior 4-H

*Western Riding*

- 021: Senior 4-H & FFA
- 022: Intermediate 4-H
- 023: Junior 4-H

*Reining*

- 024: Senior 4-H & FFA
- 025: Intermediate 4-H
- 026: Junior 4-H

*Leadline*

- 027: Leadline (Ages 7 & Under)

*Programmed Ride*

- 028: Senior 4-H & FFA
- 029: Intermediate 4-H
- 030: Junior 4-H

*Programmed Ride*

- 031: Senior 4-H & FFA
- 032: Intermediate 4-H
- 033: Junior 4-H

*English Equitation*

- 034: Senior 4-H & FFA
- 035: Intermediate 4-H
- 036: Junior 4-H
- 037: Walk-Trot

*Hunter Under Saddle*

- 038: Senior 4-H & FFA
- 039: Intermediate 4-H
- 040: Junior 4-H

*Hunter Hack*

- 041: Senior 4-H & FFA
- 042: Intermediate 4-H
- 043: Junior 4-H

*Ranch Sorting*

- 044: Senior 4-H & FFA
- 045: Intermediate 4-H
- 046: Junior 4-H

*Working Cow Horse*

- 047: Senior 4-H & FFA
- 048: Intermediate 4-H

- 049: Junior 4-H

*Ranch Riding*

- 050: Senior 4-H & FFA
- 051: Intermediate 4-H
- 052: Junior 4-H

*Barrels*

- 053: Senior 4-H & FFA
- 054: Intermediate 4-H
- 055: Junior 4-H

*Poles*

- 056: Senior 4-H & FFA
- 057: Intermediate 4-H
- 058: Junior 4-H

*Goat Tying*

- 059: Senior 4-H & FFA
- 060: Intermediate 4-H
- 061: Junior 4-H



# 4-H/FFA CLASSES

2024

## CAT

### Division 1514: Cat

- 001: Long-Haired Female
- 002: Long-Haired Male
- 003: Short-Haired Female
- 004: Short-Haired Male
- 005: Purebred, Long-Haired Male
- 006: Purebred, Long-Haired Female
- 007: Purebred, Short-Haired Male
- 008: Purebred, Short-Haired Female
- 009: Household Pet, Long-Haired Male
- 010: Household Pet, Long-Haired Female
- 011: Household Pet, Short-Haired Male
- 012: Household Pet, Short-Haired Female
- 013: Oldest Cat
- 014: Longest Tail
- 015: Longest Whisker
- 016: Shortest Tail
- 017: Best Groomed Cat
- 018: Most Colorful Cat
- 019: Best Trick
- 020: Best Costume, Cat-Decorated Cage

### Division 1515: Cat Showmanship

#### Classes

- 001: Senior 4-H (14-18)
- 002: Intermediate 4-H (11-13)
- 003: Junior 4-H (8-10)
- 004: First Year 4-H (8-10)
- 005: PeeWee (Under 8)

## DOG

### Division 1516: Dog Show

#### Classes

#### *Obedience*

- 001: First Year Beginner Novice
- 002: On Leash A
- 003: Novice A (On and Off Leash) - For dogs that have not received a first level obedience title from another organization.
- 004: Graduate Novice A - For dogs that have received a first level obedience title from another organization but have not received a second level obedience title.

005: Open A (Off Leash) - For dogs that have received a first level obedience title from another organization but have not received a second level obedience title.

006: Utility A (Off Leash) - For dogs that have received a second level obedience title from another organization.

007: On Leash B

008: Novice B (On and Off Leash) - For dogs that have not received a first level obedience title from another organization.

009: Graduate Novice B - For dogs that have received a first level obedience title from another organization but have not received a second level obedience title.

010: Open B (Off Leash) - For dogs that have received a first level obedience title from another organization but have not received a second level obedience title.

011: Utility B (Off Leash) - For dogs that have received a second level obedience title from another organization.

#### *Conformation*

012: Sporting Group

013: Hound Group

014: Working Group

015: Terrier Group

016: Toy Group

017: Non-Sporting Group

018: Herding Group

019: Any Other Purebred Dogs Not Listed Elsewhere

020: Any Other Crossbred Dog, Over 14"

021: Any Other Crossbred Dog, Under 14"

#### *Agility*

Level →	1	2	3	4	5	6	7
Under 10"	022	026	030	034	038	042	046
10" — Under 15"	023	027	031	035	039	043	047
15" — Under 20"	024	028	032	036	040	044	048
20" & Over	025	029	033	037	041	045	049

#### *Rally*

050: Junior / Novice Dog

051: Junior / Pre-Advanced Dog

052: Intermediate / Novice Dog

053: Intermediate / Pre-Advanced Dog

054: Senior / Novice Dog

055: Senior / Pre-Advanced Dog

056: Junior, Intermediate, Senior / Advanced Dog

057: Junior, Intermediate, Senior / Excellent Dog

# 4-H/FFA CLASSES

2024

058: Junior, Intermediate, Senior / RAE Dog

**Division 1517: Dog Showmanship**

001: Senior 4-H (14-18)

002: Intermediate 4-H (11-13)

003: Junior 4-H (8-10)

004: First Year 4-H (8-10)

005: PeeWee (Under 8)

## POULTRY

Superintendent: Phil Mergl

**Division 1609: Poultry**

*Poultry*

- A Cock: Male Fowl One Year and Older
- B Cockerel: Male Fowl Less Than One Year
- C Hen: Female Fowl One Year and Older
- D Pullet: Female Fowl Less Than One Year
- E Mature Trio: One Cock and Two Hens (Same Breed and Variety)
- F Young Trio: One Cockerel and Two Pullets (Same Breed and Variety)
- G Fryer Pen of Cockerels H Fryer Pen of Pullets

*Standard Poultry*

Class	A	B	C	D	E	F	G	H
American	001	002	003	004	005	006		
Asiatic	007	008	009	010	011	012		
Continental	013	014	015	016	017	018		
English	019	020	021	022	023	024		
Mediterranean	025	026	027	028	029	030		
Other Breeds	031	032	033	034	035	036		
Fryer Pens							037	038

*Bantam Poultry*

Class	A	B	C	D	E	F
Game Breeds	040	041	042	043	044	045
Single Comb	046	047	048	049	050	051
Rose Comb	052	053	054	055	056	057
All Other Combs	058	059	060	061	062	063
Feather Legged	064	065	066	067	068	069

*Waterfowl*

- A Drake: Male One Year and Older
- B Young Drake: Male Less Than One Year

- C Hen: Female One Year and Older
- D Young Hen: Female Less Than One Year
- E Gander: Male One Year and Older
- F Young Gander: Male Less Than One Year
- G Goose: Female One Year and Older
- H Young Goose: Female Less Than One Year

*Ducks*

Class	A	B	C	D
Heavy Weight Ducks	070	071	072	073
Medium Weight Ducks	074	075	076	077
Light Weight Ducks	078	079	080	081
Ducks Bantam Weight	082	083	084	085

*Geese*

Class	E	F	G	H
Heavy Weight Geese	086	087	088	089
Medium Weight Geese	090	091	092	093
Light Weight Geese	094	095	096	097

*Turkey*

- A Tom: Male One Year and Older
- B Young Tom: Male Less Than One Year
- C Hen: Female One Year and Older
- D Young Hen: Female Less Than One Year
- E Mature Trio: One Tom and Two Hens (Same Breed and Variety)
- F Young Trio: One Tom and Two Hens (Same Breed and Variety)

Class	A	B	C	D	E	F
All Standard Varieties	098	099	100	101	102	103

*Ornamental Birds*

All ornamentals to be entered as pairs, one cock and one hen of the same breed and variety only.

- A Mature Pair: Cock and Hen — One Year and Older (Same Breed and Variety)
- B Young Pair: Young Cock and Young Hen — Less Than One Year (Same Breed and Variety)

Class	A	B
Guinea Fowl	104	105
Peacocks	106	107
Pheasants	108	109
Quail	110	111
Any Other	112	113

**Division 1610: Poultry Showmanship**

# 4-H/FFA CLASSES

2024

Classes

001: Senior 4-H (14-18) and FFA

002: Intermediate 4-H (11-13)

003: Junior 4-H (8-10)

004: First Year 4-H (8-10)

005: PeeWee (Under 8)

## RABBIT

### Division 1611: Rabbit

Classes

A Junior Doe: Up to Six Months

B Intermediate Doe: Six to Eight Months

C Senior Doe: Eight Months and Older

D Junior Buck: Up to Six Months

E Intermediate Buck: Six to Eight Months

F Senior Buck: Eight Months and Older

*Six Class Breeds*

Class	A	B	C	D	E	F
Californian	001	002	003	004	005	006
Flemish Giant	007	008	009	010	011	012
French Lop - Broken	013	014	015	016	017	018
French Lop - Solid	019	020	021	022	023	024
New Zealand	025	026	027	028	029	030
Satins (White)	031	032	033	034	035	036
Satins (All Varieties)	037	038	039	040	041	042
Any Other Purebred	043	044	045	046	047	048
Any Other Crossbred	049	050	051	052	053	054

*Four Class Breeds*

Class	A	B	C	D	E	F
Angora English	055 *		056	057 *		058
Angora French	059 *		060	061 *		062
Dutch	063 *		064	065 *		066
Himalayan	067 *		068	069 *		070
Holland Lop	071 *		072	073 *		074
Jersey Wooley	075 *		076	077 *		078
Mini Lop - Colored	079 *		080	081 *		082
Mini Lop - Broken	083 *		084	085 *		086
Mini Rex	087 *		088	089 *		090
Netherland Dwarf	091 *		092	093 *		094
Polish	095 *		096	097 *		098
Rex - Broken	099 *		100	101 *		102

Rex - Colored 103 \* 104 105 \* 106

Any Other Purebred 107 \* 108 109 \* 110

Any Other Crossbred 111 \* 112 113 \* 114

*Rabbit Meat Classes*

115: Meat Pen of Three Rabbits (Limit One Entry per Exhibitor)

116: Single Fryer (Limit One Entry per Exhibitor)

*Rabbit Fur Classes*

119: Normal Fur, White Only: American, Beveren, Britannia Petite, Californian, English Lops, Florida Whites, Himalayans, Polish, New Zealand

120: Normal Fur, All Colors but White: American, Beveren, Belgian Hare, Britannia Petite, Champagne D'Argent, Checkered Giants, Cinnamon, Crème D'Argent, Dutch, English Lops, English Spot, Giant Chinchilla, Harlequins, Havana, New Zealand, Palomino, Polish, Rhinelander, Silvers, Silver Marten, Tans

121: Rex, White Only: Mini Rex and Rex

122: Rex, All Colors but White: Mini Rex and Rex

123: Satin, White Only: Satins

124: Satin, All Colors but White: Satins

125: All Other Breed Fur, All Colors: American Chinchilla, American Sable, Dwarf Hotot, Flemish Giants, French Lops, Hotot, Holland Lops, Lilac, Mini Lops, Netherland Dwarfs, Silver Fox, Standard Chinchilla

126: Fryer Fur, All Colors: A rabbit from the meat pen class.

*Rabbit Wool Classes*

- All wool breed rabbits are shown together and will be separated into two groups, white and colored. Breeds for the wool classes are English Angora, French Angora, Satin Angora, Giant Angora, American Fuzzy Lop, and Jersey Wooly.

127: Wool, White Only

128: Wool, All Colors

### Division 1612: Rabbit Showmanship

Classes

001: Senior 4-H (14-18) and FFA

002: Intermediate 4-H (11-13)

003: Junior 4-H (8-10)

004: First Year 4-H (8-10)

005: PeeWee (Under 8)

Sublette County Fair  
**4-H CLASSES**  
2024

## STATIC EXHIBITS

### Division 1816: Aerospace

- No live rocket engines allowed in any display.

#### Classes

- 001: Junior (8-10), First or Second Year in Project
- 002: Junior (8-10), Three Years in Project
- 003: Intermediate (11-13), First or Second Year in Project
- 004: Intermediate (11-13), Three Years or More in Project
- 005: Senior (14-18), First or Second Year in Project
- 006: Senior (14-18), Three Years or More in Project

### Division 1817: Archery

- No live ammunition is permitted.

#### Classes

- 001: Junior (8-10), First or Second Year in Project
- 002: Junior (8-10), Three Years in Project
- 003: Intermediate (11-13), First or Second Year in Project
- 004: Intermediate (11-13), Three Years or More in Project
- 005: Senior (14-18), First or Second Year in Project
- 006: Senior (14-18), Three Years or More in Project

### Division 1818: Beef

- All live animals should be entered in appropriate 4-H or junior shows – NOT in this division.

#### Classes

- 001: Junior (8-10), First or Second Year in Project
- 002: Junior (8-10), Three Years in Project
- 003: Intermediate (11-13), First or Second Year in Project
- 004: Intermediate (11-13), Three Years or More in Project
- 005: Senior (14-18), First or Second Year in Project
- 006: Senior (14-18), Three Years or More in Project

### Division 1819: Cake Decorating

- Decorating must be done on an artificial cake form, such as Styrofoam or inverted cake pan. Do not exhibit on real cakes.
- Exhibits should be placed on disposable plates or boards covered with foil, plastic or decorative covering, and allow 1" minimum of free space between cake and outer edge of plate or board.
- Do not bring exhibits on glass plates or valued trays.
- All exhibits with frosting that are not picked up by release of exhibits may be disposed of by 4-H management. Ribbons will be saved and given to youth.

#### Classes

##### Icing Based

- 001: Junior (8-10), First or Second Year in Project
- 002: Junior (8-10), Three Years in Project
- 003: Intermediate (11-13), First or Second Year in Project
- 004: Intermediate (11-13), Three Years or More in Project
- 005: Senior (14-18), First or Second Year in Project
- 006: Senior (14-18), Three Years or More in Project

##### Fondant Based

- 007: Junior (8-10), First or Second Year in Project
- 008: Junior (8-10), Three Years in Project
- 009: Intermediate (11-13), First or Second Year in Project
- 010: Intermediate (11-13), Three Years or More in Project
- 011: Senior (14-18), First or Second Year in Project
- 012: Senior (14-18), Three Years or More in Project

### Division 1820: Cat

- All live animals should be entered in appropriate 4-H or junior shows – NOT in this division.

#### Classes

- 001: Junior (8-10), First or Second Year in Project
- 002: Junior (8-10), Three Years in Project
- 003: Intermediate (11-13), First or Second Year in Project
- 004: Intermediate (11-13), Three Years or More in Project
- 005: Senior (14-18), First or Second Year in Project
- 006: Senior (14-18), Three Years or More in Project

### Division 1821: Civic Engagement

#### Classes

- 001: Junior (8-10), First or Second Year in Project
- 002: Junior (8-10), Three Years in Project
- 003: Intermediate (11-13), First or Second Year in Project
- 004: Intermediate (11-13), Three Years or More in Project
- 005: Senior (14-18), First or Second Year in Project
- 006: Senior (14-18), Three Years or More in Project

### 1822: Computers

- Exhibit may be accompanied with an explanation of operation and directions for use or operating.

#### Classes

- 001: Junior (8-10), First or Second Year in Project
- 002: Junior (8-10), Three Years in Project
- 003: Intermediate (11-13), First or Second Year in Project
- 004: Intermediate (11-13), Three Years or More in Project

Sublette County Fair

# 4-H CLASSES

2024

005: Senior (14-18), First or Second Year in Project  
 006: Senior (14-18), Three Years or More in Project

**Division 1823: Crocheting**

- Each exhibit may include historical information about the skill exhibited.

Classes

001: Junior (8-10), First or Second Year in Project  
 002: Junior (8-10), Three Years in Project  
 003: Intermediate (11-13), First or Second Year in Project  
 004: Intermediate (11-13), Three Years or More in Project  
 005: Senior (14-18), First or Second Year in Project  
 006: Senior (14-18), Three Years or More in Project

**Division 1824: Dog**

- All live animals should be entered in appropriate 4-H or junior shows – NOT in this division.

Classes

001: Junior (8-10), First or Second Year in Project  
 002: Junior (8-10), Three Years in Project  
 003: Intermediate (11-13), First or Second Year in Project  
 004: Intermediate (11-13), Three Years or More in Project  
 005: Senior (14-18), First or Second Year in Project  
 006: Senior (14-18), Three Years or More in Project

**Division 1825: Electricity**

Classes

001: Junior (8-10), First or Second Year in Project  
 002: Junior (8-10), Three Years in Project  
 003: Intermediate (11-13), First or Second Year in Project  
 004: Intermediate (11-13), Three Years or More in Project  
 005: Senior (14-18), First or Second Year in Project  
 006: Senior (14-18), Three Years or More in Project

**Division 1826: Entomology**

- No live insects or toxic substances allowed.
- Insect collections should be display collections.

Classes

001: Junior (8-10), First or Second Year in Project  
 002: Junior (8-10), Three Years in Project  
 003: Intermediate (11-13), First or Second Year in Project  
 004: Intermediate (11-13), Three Years or More in Project  
 005: Senior (14-18), First or Second Year in Project  
 006: Senior (14-18), Three Years or More in Project



**Division 1827: Fabric and Fashion**

- Exhibits involving comparison shopping or wardrobe selection are entered in buymanship classes (portfolios, posters, etc.). The actual garment(s) are not evaluated in Buymanship classes.
- Youth competing in the Fashion Revue should enter in Division 1880.

Classes

*Construction*

001: Junior (8-10), First or Second Year in Project  
 002: Junior (8-10), Three Years in Project  
 003: Intermediate (11-13), First or Second Year in Project  
 004: Intermediate (11-13), Three Years or More in Project  
 005: Senior (14-18), First or Second Year in Project  
 006: Senior (14-18), Three Years or More in Project

*Buymanship*

007: Junior (8-10), First or Second Year in Project  
 008: Junior (8-10), Three Years in Project  
 009: Intermediate (11-13), First or Second Year in Project  
 010: Intermediate (11-13), Three Years or More in Project  
 011: Senior (14-18), First or Second Year in Project  
 012: Senior (14-18), Three Years or More in Project

*Embellished or Recycled*

013: Junior (8-10), First or Second Year in Project  
 014: Junior (8-10), Three Years in Project  
 015: Intermediate (11-13), First or Second Year in Project  
 016: Intermediate (11-13), Three Years or More in Project  
 017: Senior (14-18), First or Second Year in Project  
 018: Senior (14-18), Three Years or More in Project



Sublette County Fair  
**4-H CLASSES**  
2024

*Educational Exhibit*

- 019: Junior (8-10), First or Second Year in Project  
020: Junior (8-10), Three Years in Project  
021: Intermediate (11-13), First or Second Year in Project  
022: Intermediate (11-13), Three Years or More in Project  
023: Senior (14-18), First or Second Year in Project  
024: Senior (14-18), Three Years or More in Project

**Division 1828: Food and Nutrition**

- Recipes are required with all entries. Recipes will not be returned and become the property of 4-H. Recipes must include the member's name, age, and county they are representing.
- Only enter foods that can be safely stored at room temperature. Foods determined to be unsafe at room temperature will be disqualified with the decision of the judge being final. (For example, do not enter cream pies, casseroles, or items with cream cheese frosting, etc.) Foods entered should be suitable for freezing prior to State Fair to aid in transportation to the state fair.
- Judges may or may not choose to open, taste, cut, handle, etc., any entry.
- Judges will negatively evaluate entries using commercial cake or bread mixes or those with wrappers (cupcakes, muffins, etc.).
- Exhibit on 6" or smaller, plastic coated or Styrofoam plate when possible.
- When smaller items are exhibited (rolls, cookies, biscuits, etc.) enter three items for each class.
- When single items are exhibited (cakes, loaves, etc.), enter one fourth of the item. Breads should be displayed as an end-cut, cut from top crust through bottom crust.

Classes

*Prepared*

- 001: Junior (8-10), First or Second Year in Project  
002: Junior (8-10), Three Years in Project  
003: Intermediate (11-13), First or Second Year in Project  
004: Intermediate (11-13), Three Years or More in Project  
005: Senior (14-18), First or Second Year in Project  
006: Senior (14-18), Three Years or More in Project

*Preserved*

- Recipes are required with all entries. Recipes will not be

returned and become the property of 4-H. Recipes must include the member's name, age, and county they are representing.

- All exhibits must attach the following information in some fashion:
  - Product name
  - Processing method (boiling water or pressure)
  - If pressure, list pounds of pressure
  - Processing time
  - Altitude where product was processed
  - Style of packing (raw or hot)
  - Source of recipe
  - Drying process and internal temperature (for jerky)
- Due to potential hazards of food-borne illness, judges may or may not choose to open, taste, unseal, handle, etc., any entry.
- Clear, clean (usually half-pint, pint, or quart) Mason home canning jars in good condition with two-piece metal canning lids (flat lid and band) must be used. Regular or wide-mouth styles may be used.
- All entries will be initially evaluated based on meeting food safety guidelines from USDA and current UW publications found at: <http://www.wyoextension.org/eatwyoming/preserve.php> including appropriate altitude adjustments and processing times.

007: Junior (8-10), First or Second Year in Project

008: Junior (8-10), Three Years in Project

009: Intermediate (11-13), First or Second Year in Project

010: Intermediate (11-13), Three Years or More in Project

011: Senior (14-18), First or Second Year in Project

012: Senior (14-18), Three Years or More in Project

**Division 1829: Gardening and Horticulture**

- Please use zip close bags for easy removal.
- Superintendent will have the authority to dispose of entries which have begun to spoil before the end of fair. Exhibitors will still receive their ribbons and awards.

Classes

001: Junior (8-10), First or Second Year in Project

002: Junior (8-10), Three Years in Project

003: Intermediate (11-13), First or Second Year in Project

004: Intermediate (11-13), Three Years or More in Project

Sublette County Fair  
**4-H CLASSES**  
2024

005: Senior (14-18), First or Second Year in Project

006: Senior (14-18), Three Years or More in Project

**Division 1830: Geology**

- Use display board or box suitable for vertical display. Attach specimens with wire to the board or box so there is no possibility of their coming loose.

Classes

001: Junior (8-10), First or Second Year in Project

002: Junior (8-10), Three Years in Project

003: Intermediate (11-13), First or Second Year in Project

004: Intermediate (11-13), Three Years or More in Project

005: Senior (14-18), First or Second Year in Project

006: Senior (14-18), Three Years or More in Project Division

**1831: Goat**

- All live animals should be entered in appropriate 4-H or youth shows – NOT in this division.

Classes

001: Junior (8-10), First or Second Year in Project

002: Junior (8-10), Three Years in Project

003: Intermediate (11-13), First or Second Year in Project

004: Intermediate (11-13), Three Years or More in Project

005: Senior (14-18), First or Second Year in Project

006: Senior (14-18), Three Years or More in Project

**Division 1832: Health**

Classes

001: Junior (8-10), First or Second Year in Project

002: Junior (8-10), Three Years in Project

003: Intermediate (11-13), First or Second Year in Project

004: Intermediate (11-13), Three Years or More in Project

005: Senior (14-18), First or Second Year in Project

006: Senior (14-18), Three Years or More in Project

**Division 1833: Horse**

- All live animals should be entered in appropriate 4-H or youth shows – NOT in this division.

Classes

001: Junior (8-10), First or Second Year in Project

002: Junior (8-10), Three Years in Project

003: Intermediate (11-13), First or Second Year in Project

004: Intermediate (11-13), Three Years or More in Project

005: Senior (14-18), First or Second Year in Project

006: Senior (14-18), Three Years or More in Project

**Division 1834: Interior Design**

Classes

001: Junior (8-10), First or Second Year in Project

002: Junior (8-10), Three Years in Project

003: Intermediate (11-13), First or Second Year in Project

004: Intermediate (11-13), Three Years or More in Project

005: Senior (14-18), First or Second Year in Project

006: Senior (14-18), Three Years or More in Project

**Division 1835: Knitting**

- Each exhibit may include historical information about the skill exhibited.

Classes

001: Junior (8-10), First or Second Year in Project

002: Junior (8-10), Three Years in Project

003: Intermediate (11-13), First or Second Year in Project

004: Intermediate (11-13), Three Years or More in Project

005: Senior (14-18), First or Second Year in Project

006: Senior (14-18), Three Years or More in Project

**Division 1836: Leathercraft**

Classes

001: Junior (8-10), First or Second Year in Project

002: Junior (8-10), Three Years in Project

003: Intermediate (11-13), First or Second Year in Project

004: Intermediate (11-13), Three Years or More in Project

005: Senior (14-18), First or Second Year in Project

006: Senior (14-18), Three Years or More in Project

**Division 1837: Llamas and Alpacas**

Classes

001: Junior (8-10), First or Second Year in Project

002: Junior (8-10), Three Years in Project

003: Intermediate (11-13), First or Second Year in Project

004: Intermediate (11-13), Three Years or More in Project

005: Senior (14-18), First or Second Year in Project

006: Senior (14-18), Three Years or More in Project Division

**1838: Muzzleloading**

- No live ammunition is permitted.

Classes

001: Junior (8-10), First or Second Year in Project

002: Junior (8-10), Three Years in Project

003: Intermediate (11-13), First or Second Year in Project

004: Intermediate (11-13), Three Years or More in Project

Sublette County Fair

# 4-H CLASSES

2024

005: Senior (14-18), First or Second Year in Project  
 006: Senior (14-18), Three Years or More in Project

**Division 1839: Nature and Ecology**

Classes

001: Junior (8-10), First or Second Year in Project  
 002: Junior (8-10), Three Years in Project  
 003: Intermediate (11-13), First or Second Year in Project  
 004: Intermediate (11-13), Three Years or More in Project  
 005: Senior (14-18), First or Second Year in Project  
 006: Senior (14-18), Three Years or More in Project

**Division 1840: Photography**

- Exhibits shall be mounted securely on a stiff mounting board or foam board.
- Posters, pictures, artwork and photography exhibits must come with a method for hanging from hooks on pegboard.
- No breakable glass allowed – use of Plexiglas or shrink plastic is allowed.

Classes

*Photography*

001: Junior (8-10), First or Second Year in Project  
 002: Junior (8-10), Three Years in Project  
 003: Intermediate (11-13), First or Second Year in Project  
 004: Intermediate (11-13), Three Years or More in Project  
 005: Senior (14-18), First or Second Year in Project  
 006: Senior (14-18), Three Years or More in Project

*Digital Creation*

- Exhibits, created from an existing photograph that have been digitally altered to change the original content resulting in a new and unique piece.
- This category is not intended for enhanced photographs such as removing red-eye, adding a border, adjusting color or shading, etc.

007: Junior (8-10), First or Second Year in Project  
 008: Junior (8-10), Three Years in Project  
 009: Intermediate (11-13), First or Second Year in Project  
 010: Intermediate (11-13), Three Years or More in Project  
 011: Senior (14-18), First or Second Year in Project  
 012: Senior (14-18), Three Years or More in Project

**Division 1841: Pistol**

- No live ammunition is permitted.

Classes

001: Junior (8-10), First or Second Year in Project  
 002: Junior (8-10), Three Years in Project  
 003: Intermediate (11-13), First or Second Year in Project  
 004: Intermediate (11-13), Three Years or More in Project  
 005: Senior (14-18), First or Second Year in Project  
 006: Senior (14-18), Three Years or More in Project

**Division 1842: Pocket Pet**

- All live animals should be entered in appropriate 4-H or youth shows – NOT in this division.

Classes

001: Junior (8-10), First or Second Year in Project  
 002: Junior (8-10), Three Years in Project  
 003: Intermediate (11-13), First or Second Year in Project  
 004: Intermediate (11-13), Three Years or More in Project  
 005: Senior (14-18), First or Second Year in Project  
 006: Senior (14-18), Three Years or More in Project

**Division 1843: Poultry**

- All live animals should be entered in appropriate 4-H or youth shows – NOT in this division.

Classes

001: Junior (8-10), First or Second Year in Project  
 002: Junior (8-10), Three Years in Project  
 003: Intermediate (11-13), First or Second Year in Project  
 004: Intermediate (11-13), Three Years or More in Project  
 005: Senior (14-18), First or Second Year in Project  
 006: Senior (14-18), Three Years or More in Project

**Division 1844: Quilting**

- Each exhibit may include historical information about the skill exhibited.
- A quilt must be made up of three parts: top (pieced, panels, whole cloth), middle (batting, blanket, flannel, etc.), and back (whole or pieced fabric).
- Quilting methods include: machine (either domestic or longarm), hand, or tied.
- If no quilting method is used, the item should not be entered as a quilting project exhibit. For example, a duvet cover with no quilting would be more appropriately entered into the Interior Design division or, if using sewing techniques, entered into the Fabric and Fashion division.

Classes

*Traditional*

Sublette County Fair

# 4-H CLASSES

2024

- 001: Junior (8-10), First or Second Year in Project
- 002: Junior (8-10), Three Years in Project
- 003: Intermediate (11-13), First or Second Year in Project
- 004: Intermediate (11-13), Three Years or More in Project
- 005: Senior (14-18), First or Second Year in Project
- 006: Senior (14-18), Three Years or More in Project
- Tied or Pieced*
- 007: Junior (8-10), First or Second Year in Project
- 008: Junior (8-10), Three Years in Project
- 009: Intermediate (11-13), First or Second Year in Project
- 010: Intermediate (11-13), Three Years or More in Project
- 011: Senior (14-18), First or Second Year in Project
- 012: Senior (14-18), Three Years or More in Project

**Division 1845: Rabbit**

- All live animal exhibits should be entered in appropriate 4-H or youth shows – NOT in this division.

Classes

- 001: Junior (8-10), First or Second Year in Project
- 002: Junior (8-10), Three Years in Project
- 003: Intermediate (11-13), First or Second Year in Project
- 004: Intermediate (11-13), Three Years or More in Project
- 005: Senior (14-18), First or Second Year in Project
- 006: Senior (14-18), Three Years or More in Project

**Division 1846: Range Management**

- Specimens of noxious weeds or trees are not permitted.

Classes

- 001: Junior (8-10), First or Second Year in Project
- 002: Junior (8-10), Three Years in Project
- 003: Intermediate (11-13), First or Second Year in Project
- 004: Intermediate (11-13), Three Years or More in Project
- 005: Senior (14-18), First or Second Year in Project
- 006: Senior (14-18), Three Years or More in Project

**Division 1847: Recreation**

Classes

- 001: Junior (8-10), First or Second Year in Project
- 002: Junior (8-10), Three Years in Project
- 003: Intermediate (11-13), First or Second Year in Project
- 004: Intermediate (11-13), Three Years or More in Project
- 005: Senior (14-18), First or Second Year in Project
- 006: Senior (14-18), Three Years or More in Project

**Division 1848: Rifle**

- No live ammunition is permitted.

Classes

- 001: Junior (8-10), First or Second Year in Project
- 002: Junior (8-10), Three Years in Project
- 003: Intermediate (11-13), First or Second Year in Project
- 004: Intermediate (11-13), Three Years or More in Project
- 005: Senior (14-18), First or Second Year in Project
- 006: Senior (14-18), Three Years or More in Project

**Division 1849: Robotics**

- Exhibit may be accompanied with an explanation of operation and directions for use or operating.

Classes

- 001: Junior (8-10), First or Second Year in Project
- 002: Junior (8-10), Three Years in Project
- 003: Intermediate (11-13), First or Second Year in Project
- 004: Intermediate (11-13), Three Years or More in Project
- 005: Senior (14-18), First or Second Year in Project
- 006: Senior (14-18), Three Years or More in Project

**Division 1850: Ropcraft**

Classes

- 001: Junior (8-10), First or Second Year in Project
- 002: Junior (8-10), Three Years in Project
- 003: Intermediate (11-13), First or Second Year in Project
- 004: Intermediate (11-13), Three Years or More in Project
- 005: Senior (14-18), First or Second Year in Project
- 006: Senior (14-18), Three Years or More in Project



Sublette County Fair  
**4-H CLASSES**  
2024

**Division 1851: Self-Determined**

- All self-determined projects must have a completed approval form on file with the state 4-H office before fair.
- Each exhibit in the Self-Determined division should be accompanied by an "information sheet" indicating:
  - Topics selected
  - Goals to be achieved
  - How the project was carried out
  - Accomplishments
- No live animal or insect exhibits will be accepted.

Classes

001: Junior (8-10), First or Second Year in Project  
002: Junior (8-10), Three Years in Project  
003: Intermediate (11-13), First or Second Year in Project  
004: Intermediate (11-13), Three Years or More in Project  
005: Senior (14-18), First or Second Year in Project  
006: Senior (14-18), Three Years or More in Project

**Division 1852: Sheep**

- All live animal exhibits should be entered in appropriate 4-H or youth shows – NOT in this division.

Classes

001: Junior (8-10), First or Second Year in Project  
002: Junior (8-10), Three Years in Project  
003: Intermediate (11-13), First or Second Year in Project  
004: Intermediate (11-13), Three Years or More in Project  
005: Senior (14-18), First or Second Year in Project  
006: Senior (14-18), Three Years or More in Project

**Division 1853: Shotgun**

- No live ammunition is permitted.

Classes

001: Junior (8-10), First or Second Year in Project  
002: Junior (8-10), Three Years in Project  
003: Intermediate (11-13), First or Second Year in Project  
004: Intermediate (11-13), Three Years or More in Project  
005: Senior (14-18), First or Second Year in Project  
006: Senior (14-18), Three Years or More in Project

**Division 1854: Sport Fishing**

Classes

001: Junior (8-10), First or Second Year in Project  
002: Junior (8-10), Three Years in Project  
003: Intermediate (11-13), First or Second Year in Project

004: Intermediate (11-13), Three Years or More in Project  
005: Senior (14-18), First or Second Year in Project  
006: Senior (14-18), Three Years or More in Project

**Division 1855: Swine**

- All live animal exhibits should be entered in appropriate 4-H or youth shows – NOT in this division.

Classes

001: Junior (8-10), First or Second Year in Project  
002: Junior (8-10), Three Years in Project  
003: Intermediate (11-13), First or Second Year in Project  
004: Intermediate (11-13), Three Years or More in Project  
005: Senior (14-18), First or Second Year in Project  
006: Senior (14-18), Three Years or More in Project

**Division 1856: Veterinary Science**

- No dead or parts of a dead animal are allowed unless properly preserved. The State 4-H Office reserves the right to disqualify and dispose of any project considered a health hazard or potential health hazard.

Classes

001: Junior (8-10), First or Second Year in Project  
002: Junior (8-10), Three Years in Project  
003: Intermediate (11-13), First or Second Year in Project  
004: Intermediate (11-13), Three Years or More in Project  
005: Senior (14-18), First or Second Year in Project  
006: Senior (14-18), Three Years or More in Project

**Division 1857: Visual Arts**

- A project done in school should be eligible for display or show through one, but only one organization. The organization should be chosen by the youth member – be that school or 4-H.
- Sublette County Fair and 4-H are not responsible for missing or broken items.

Classes

*Crafts*

001: Junior (8-10), First or Second Year in Project  
002: Junior (8-10), Three Years in Project  
003: Intermediate (11-13), First or Second Year in Project  
004: Intermediate (11-13), Three Years or More in Project  
005: Senior (14-18), First or Second Year in Project  
006: Senior (14-18), Three Years or More in Project

*Ceramics & Sculptures*

# 4-H CLASSES

2024

007: Junior (8-10), First or Second Year in Project  
008: Junior (8-10), Three Years in Project  
009: Intermediate (11-13), First or Second Year in Project  
010: Intermediate (11-13), Three Years or More in Project  
011: Senior (14-18), First or Second Year in Project  
012: Senior (14-18), Three Years or More in Project

## *Painting & Drawing*

013: Junior (8-10), First or Second Year in Project  
014: Junior (8-10), Three Years in Project  
015: Intermediate (11-13), First or Second Year in Project  
016: Intermediate (11-13), Three Years or More in Project  
017: Senior (14-18), First or Second Year in Project  
018: Senior (14-18), Three Years or More in Project

## **Division 1858: Welding**

### Classes

001: Junior (8-10), First or Second Year in Project  
002: Junior (8-10), Three Years in Project  
003: Intermediate (11-13), First or Second Year in Project  
004: Intermediate (11-13), Three Years or More in Project  
005: Senior (14-18), First or Second Year in Project  
006: Senior (14-18), Three Years or More in Project

## **Division 1859: Wildlife and Hunting**

- No dead or parts of a dead animal are allowed unless properly preserved. The State 4-H Office reserves the right to disqualify and dispose of any project considered a health hazard or potential health hazard.

### Classes

001: Junior (8-10), First or Second Year in Project  
002: Junior (8-10), Three Years in Project  
003: Intermediate (11-13), First or Second Year in Project  
004: Intermediate (11-13), Three Years or More in Project  
005: Senior (14-18), First or Second Year in Project

006: Senior (14-18), Three Years or More in Project

## **Division 1860: Woodworking**

### Classes

001: Junior (8-10), First or Second Year in Project  
002: Junior (8-10), Three Years in Project  
003: Intermediate (11-13), First or Second Year in Project  
004: Intermediate (11-13), Three Years or More in Project  
005: Senior (14-18), First or Second Year in Project  
006: Senior (14-18), Three Years or More in Project

## **Division 1861: Youth Leadership**

### Classes

001: Junior (8-10), First or Second Year in Project  
002: Junior (8-10), Three Years in Project  
003: Intermediate (11-13), First or Second Year in Project  
004: Intermediate (11-13), Three Years or More in Project  
005: Senior (14-18), First or Second Year in Project  
006: Senior (14-18), Three Years or More in Project

## **Division 1865: Club Exhibits**

### Classes

001: Any project completed by any 4-H club or 4-H group.

## **Division 1880: Fashion Revue**

### Classes

001: Junior (8-10), Constructed to Wear  
002: Intermediate (11-13), Constructed to Wear  
003: Senior (14-18), Constructed to Wear  
004: Junior (8-10), Ready to Wear  
005: Intermediate (11-13), Ready to Wear  
006: Senior (14-18), Ready to Wear

## **Division 1890: PeeWee**

### Classes

001: Any static exhibit project completed by a PeeWee.

**MAKING THE BEST  
BETTER**



# OPEN CLASS STATIC EXHIBITS

2024

## DEPARTMENT 001: FLORICULTURE AND HORTICULTURE

### Division 1001: From the Field

Any type of hay may be entered into this division. Please indicate what type of hay it is in the description on your entry. Entries will be judged on the following:

- Uniformity of variety, length, head length, color, and in case of forage sheaves, in leafiness (40%).
- Quality of feed or seed and preservation curing (30%).
- Arrangement of entry, neatness, cleanliness, size, compactness, and freedom (30%).

#### Classes

001: Sheaf Forage Hay

002: Baled Forages

### Division 1002: Vegetables

Any type of vegetable can be entered into this division. Please enter your vegetables based on the location they were grown and indicate what type of vegetable it is in the description on your entry. Plant tops do not need to be attached. Please enter at least three vegetables per entry. Entries will be judged on the following:

- Quality (60%)
- Uniformity of Sample (20%)
- Marketable Condition (20%)

#### Classes

001: Outside

002: Greenhouse

003: Windowsill

004: Hydroponic

### Division 1003: Fruits

Any type of vegetable can be entered into this division. Please enter your vegetables based on the location they were grown and indicate what type of vegetable it is in the description on your entry. Plant tops do not need to be attached. Please enter at least three vegetables per entry. Entries will be judged on the following:

- Quality (60%)
- Uniformity of Sample (20%)
- Marketable Condition (20%)

#### Classes

001: Outside

002: Greenhouse

003: Windowsill

004: Hydroponic

### Division 1004: Floriculture

Use clear, small glass bottles so that stems are visible. For cut flowers, please enter at least two sprays, stems, or spikes per exhibit – there will be no disqualification for entering extra. Exhibits will be judged on uniformity and quality.

#### Classes

001: Cut Flowers

002: Greenhouse Flowers or Plants

003: Potted Plants

004: Floral Arrangement

## DEPARTMENT 002: NEEDLEWORK

### Division 2001: Needlework

#### Classes

001: Applique

002: Bobbin Lace

003: Crochet

004: Embroidery

005: Knit

006: Needlepoint

007: Tatting

008: Upholstery

009: Other

## DEPARTMENT 003: QUILTING

Please state if quilting was done by someone other than the exhibitor.

### Division 3001: Quilts

#### Classes

001: Baby

002: Bed Size

003: Lap

004: Miniature

005: Pillow

006: Table Runner

007: Wall Hanging

008: Wearable Item

009: Other

# OPEN CLASS STATIC EXHIBITS

2024

## DEPARTMENT 004: SEWING

### Division 4001: Constructed Items

#### Classes

001: Any Constructed Item

### Division 4002: Remodeled Items

#### Classes

001: Any Remodeled Item

## DEPARTMENT 005: CULINARY

Only products of the exhibitor's "home kitchen" are eligible and must have been prepared since last year's fair.

No prepared mixes are allowed.

If any visible characteristics are of concern to the judge, the judge is not obligated to further evaluate and the exhibit will receive a white ribbon.

### Division 5001: Baking

#### Classes

001: Breads - Please enter one standard size loaf of bread.

002: Cakes

003: Cookies - Please enter at least six individually wrapped cookies.

004: Pies - Please have pies in a foil pan.

005: Candy

### Division 5002: Canning

Please bring two cans per entry as the judges may open canned goods for tasting. If any canned item is opened, it will immediately be refrigerated and the exhibitor will be notified so it can be picked up. The remaining canned item will be used for display. It is encouraged to decorate your canned items for display, but it is not required and decoration will not be considered in the judging process.

Canned fruits, meats, and vegetables must be sealed in uniform and standard canning glass jars.

All jellies must be in standard jelly glasses. They should be water bathed. Do not use paraffin.

All canned goods must be labeled with the name of the product, processing method, and time processed.

#### Classes

001: Jellies, Preserves, Marmalades, Butters, Jams

002: Fruit & Vegetables

003: Meat

004: Sauces & Soups

### Division 5003: Decorating

Entries will be judged only on decoration / presentation.

#### Classes

001: Cakes

002: Cookies

003: Charcuterie

## DEPARTMENT 006: ARTS

### Division 6001: Beginner

Adults who have not sold artwork and have not exhibited for more than two previous years.

### Division 6002: Amateur

Non-professional adults who have won ribbons or sold artwork under \$350 in one year, or have exhibited more than two previous years.

### Division 6003: Non-Advanced

Non-professional adults who have sold more than \$350 worth of artwork in one year, or have three or more years of art school training. Work must be original compositions.

### Division 6004: Advanced

Adults who have sold more than \$350 worth of artwork in one year, or have three or more years of art school training. Work must be original compositions.

### Division 6005: Children Aged 5 and Under

### Division 6006: Children Aged 6 and 7

### Division 6007: Children Aged 8 and 9

### Division 6008: Children Aged 10 and 11

### Division 6009: Children Aged 12 and 13

### Division 6010: Children Aged 14 and 15

### Division 6011: Children Aged 16 and 17

#### Classes (Divisions 6001 – 6011)

001: Black and White Graphics (Pencil, Ink, Etc.)

002: Collage

003: Copy (Provide Reference of the Original)

004: Drawings in Color (Crayons, Colored Pencil, Markers, Pastel Pencil, Etc.)

005: Mixed Media (Any Two or More Media Used)

006: Oils and Opaque Acrylics

007: Pastels (Colored Chalks)

008: Sculpture (Three-Dimensional Works)



# OPEN CLASS STATIC EXHIBITS

2024

- 009: Tempera or Gouache (Opaque Water-Based Paint)
- 010: Watercolors and Transparent Acrylics
- 011: Other

## DEPARTMENT 007: CRAFTS

### Division 7001: Ceramics

#### Classes

- 001: Any Ceramic Craft

### Division 7002: Handicraft

#### Classes

- 001: Any Handicraft Craft

### Division 7003: Lapidary, Stone, and Antler Craft

#### Classes

- 001: Lapidary Craft
- 002: Stone Craft
- 003: Antler Craft

### Division 7004: Leather Craft

#### Classes

- 001: Any Leather Craft

### Division 7005: Pottery and Stoneware

#### Classes

- 001: Pottery
- 002: Stoneware

### Division 7006: Rope Craft

#### Classes

- 001: Any Rope Craft

### Division 7007: Silversmith

#### Classes

- 001: Any Silversmith

### Division 7008: Welding and Machining

#### Classes

- 001: Welding
- 002: Machining

### Division 7009: Wood Craft

#### Classes

- 001: Any Wood Craft

### Division 7010: Miscellaneous Specialty Crafts

#### Classes

- 001: Any Craft

## DEPARTMENT 008: PHOTOGRAPHY

### Division 8001: Junior (Age 18 and Under)

### Division 8002: Adult (Beginners and Amateurs)

### Division 8003: Professional

Professional is considered to use their work as a business or has two or more years of specialized training.

#### Classes (Divisions 8001 – 8003)

- 001: Abstract
- 002: Agriculture
- 003: Animals (Including Fish, Birds, Insects, Etc.)
- 004: Architectural
- 005: Historical
- 006: Industrial
- 007: Miscellaneous
- 008: People
- 009: Picture Series (Must Be on a Single Mount)
- 010: Plants
- 011: Scenic Landscapes
- 012: Sports
- 013: Still Life
- 014: Vacation

## DEPARTMENT 009: COLLECTIBLES

Collectibles must be owned by the exhibitor. Please enter at least three collectibles per entry, unless it is an extra large item. Each entry should include a typed or written description about the items entered.

### Division 9001: Collectible Items

#### Classes

- 001: Antique Collections
- 002: Modern Collections
- 003: Youth Collections

## DEPARTMENT 010: DISPLAY ONLY

Display only exhibits must be entered during the open exhibit entry hours.

These exhibits will not be judged, but will be voted on by attendees to receive a special \$100 People's Choice Award.

# STATIC CONTESTS & EVENTS

2024

## PAINTED ROCK CONTEST

Monday, July 22

8:00AM to 6:00PM

Commercial Building

Contact: Kailey Barlow — 307-276-5373

[Entry Information](#)

Entry Form Download: [www.sublettecountyfair.com](http://www.sublettecountyfair.com)

Entry Deadline: July 22

Entry Fee: \$0

For more information, scan the appropriate QR code or visit [www.sublettecountyfair.com](http://www.sublettecountyfair.com) and follow the links.



## THE HOME BUTCHER

Thursday, July 25

Public Tasting: 1:00PM

Commercial Building

Contact: Kailey Barlow — 307-275-5373

[Entry Information](#)

Entry Form Download: [www.sublettecountyfair.com](http://www.sublettecountyfair.com)

Entry Deadline: July 25 at 10:00AM

Entry Fee: \$0

For more information, scan the appropriate QR code or visit [www.sublettecountyfair.com](http://www.sublettecountyfair.com) and follow the links.



## RECYCLED WESTERN ART CONTEST

Monday, July 22

8:00AM to 6:00PM

Commercial Building

Contact: Kailey Barlow — 307-276-5373

[Entry Information](#)

Entry Form Download: [www.sublettecountyfair.com](http://www.sublettecountyfair.com)

Entry Deadline: July 22

Entry Fee: \$0

For more information, scan the appropriate QR code or visit [www.sublettecountyfair.com](http://www.sublettecountyfair.com) and follow the links.



## CHOCOLATE DESSERT BAKE-OFF

Thursday, July 25

Public Tasting: 1:00PM

Commercial Building

Contact: Kailey Barlow — 307-275-5373

[Entry Information](#)

Entry Form Download: [www.sublettecountyfair.com](http://www.sublettecountyfair.com)

Entry Deadline: July 25 at 10:00AM

Entry Fee: \$0

For more information, scan the appropriate QR code or visit [www.sublettecountyfair.com](http://www.sublettecountyfair.com) and follow the links.



## COLORING CONTEST

Monday, July 22

8:00AM to 6:00PM

Commercial Building

Contact: Kailey Barlow — 307-276-5373

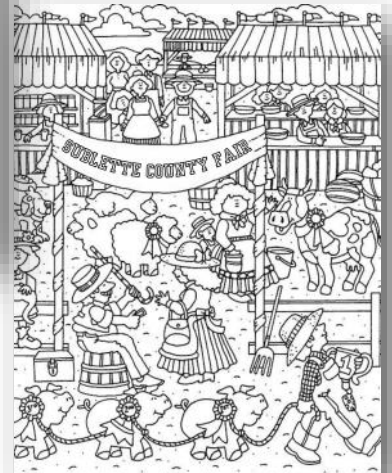
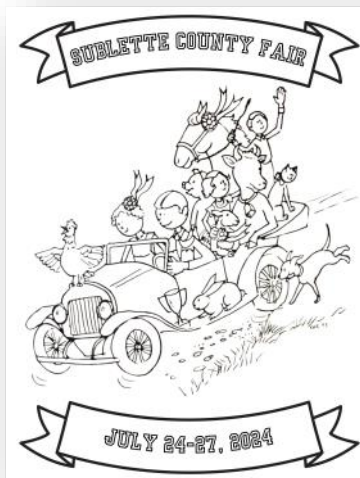
[Entry Information](#)

Coloring Page Download: [www.sublettecountyfair.com](http://www.sublettecountyfair.com)

Entry Deadline: July 22

Entry Fee: \$0

For more information, scan the appropriate QR code or visit [www.sublettecountyfair.com](http://www.sublettecountyfair.com) and follow the links.



# HORSE / RODEO CONTESTS & EVENTS

2024

## BARREL RACE

Friday, July 19

Time Only's at 6:00PM — Race at 8:00PM

Saturday, July 20

Time Only's at 8:00AM — Race at 10:00AM

Ag Center

Contact: Jessie Chrisman — 307-260-5266

[Entry Information](#)

Enter Online: [www.fastenter.com](http://www.fastenter.com)

Pre-Entry Deadline: Wednesday, July 17

Entry Fee: Varies

*For more information, scan the appropriate QR code or visit [www.sublettecountyfair.com](http://www.sublettecountyfair.com) and follow the links.*



## TEAM BRANDING

Saturday, July 20

3:00PM

Ag Center

Contact: Nicole Uhl — 307-690-9098

[Entry Information](#)

Enter Online: [www.fastenter.com](http://www.fastenter.com)

Pre-Entry Deadline: Wednesday, July 17

Entry Fee: Varies

*For more information, scan the appropriate QR code or visit [www.sublettecountyfair.com](http://www.sublettecountyfair.com) and follow the links.*



## TEAM ROPING

Sunday, July 21

12:00PM

Ag Center

Contact: Chance Stevie — 307-749-0882

[Entry Information](#)

Enter Onsite Only

Entry Fee: Varies

*For more information, scan the appropriate QR code or visit [www.sublettecountyfair.com](http://www.sublettecountyfair.com) and follow the links.*



## LITTLE BUCKAROO RODEO

Thursday, July 25

7:00PM

Ag Center

Contact: Kailey Barlow — 307-276-5373

[Entry Information](#)

Enter Online: [www.sublettecountyfair.com](http://www.sublettecountyfair.com)

Pre-Entry Deadline: Wednesday, July 17

Entry Fee: Varies

*For more information, scan the appropriate QR code or visit [www.sublettecountyfair.com](http://www.sublettecountyfair.com) and follow the links.*



# LIVESTOCK CONTESTS & EVENTS

2024

## BRED & RAISED MARKET LAMB SHOW

Thursday, July 25

Following Youth Show

Event Center

Contact: Callie Whinnery — 307-260-6956

[Entry Information](#)

Enter Online: [www.sublettecountyfair.com](http://www.sublettecountyfair.com)

Entry Deadline: Wednesday, July 17

Entry Fee: \$10

For more information, scan the appropriate QR code or visit [www.sublettecountyfair.com](http://www.sublettecountyfair.com) and follow the links.



## CERTIFIED HEREFORD BEEF ULTRASOUND PREMIUM CONTEST

Wednesday, July 24

11:00AM

Event Center

Contact: Michael McGinnis — 307-386-2382

[Entry Information](#)

Enter Online: [www.sublettecountyfair.com](http://www.sublettecountyfair.com)

Pre-Entry Deadline: Wednesday, July 17

Entry Fee: \$0

For more information, scan the appropriate QR code or visit [www.sublettecountyfair.com](http://www.sublettecountyfair.com) and follow the links.



## SHOWMANSHIP JACKPOT

Thursday, July 25

5:00PM

Event Center

Contact: Cody Post — 307-851-0374

[Entry Information](#)

Enter Online: [www.sublettecountyfair.com](http://www.sublettecountyfair.com)

Entry Deadline: Wednesday, July 24

Entry Fee: \$5

For more information, scan the appropriate QR code or visit [www.sublettecountyfair.com](http://www.sublettecountyfair.com) and follow the links.



## GREEN RIVER VALLEY SELECT PRODUCERS PROGRAM

Friday, July 26

Following Round Robin

Event Center

Contact: Audra Rouge — 307-760-5737

[Entry Information](#)

Enter Online: [www.sublettecountyfair.com](http://www.sublettecountyfair.com)

Entry Deadline: Wednesday, July 17

Entry Fee: \$0

For more information, scan the appropriate QR code or visit [www.sublettecountyfair.com](http://www.sublettecountyfair.com) and follow the links.



## BRED & RAISED MARKET BEEF SHOW

Saturday, July 27

9:00AM

Event Center

Contact: Wayne Barlow — 307-260-8515

[Entry Information](#)

Enter Online: [www.sublettecountyfair.com](http://www.sublettecountyfair.com)

Pre-Entry Deadline: Wednesday, July 17

Entry Fee: \$10

Late entries will be accepted until the conclusion of weigh-ins on July 24 for \$100/entry. After that, absolutely no entries will be accepted.

For more information, scan the appropriate QR code or visit [www.sublettecountyfair.com](http://www.sublettecountyfair.com) and follow the links.



# MISCELLANEOUS CONTESTS & EVENTS

2024

## LYNN THOMAS ART SHOW & SALE

Wednesday, July 24 — Saturday, July 27

10:00AM to 6:00PM

Community Hall

Contact: Sharon Schell — 307-749-7661

[Entry Information](#)

Enter by calling Sharon Schell for more information.

Entry Deadline: July 1

Entry Fee: \$0

*For more information, scan the appropriate QR code or visit [www.sublettecountyfair.com](http://www.sublettecountyfair.com) and follow the links.*

**There will also be a two-day oil workshop held in conjunction with the art show. Call Sharon for more information.**



## CORNHOLE TOURNAMENT

Saturday, July 27

5:30PM

Ag Center

Contact: Brandy Kosmann — 307-260-3077

[Entry Information](#)

Enter Online: Scoreholio

Entry Deadline: 4:30PM on July 27

Entry Fee: \$20 / Team

*For more information, scan the appropriate QR code or visit [www.sublettecountyfair.com](http://www.sublettecountyfair.com) and follow the links.*

## ARCHERY SHOOT

Sunday, July 28

10:00AM

Ag Center

Contact: Russell Burton — 307-329-8527

[Entry Information](#)

Enter Onsite Only

Entry Fee: \$10-\$20

*For more information, scan the appropriate QR code or visit [www.sublettecountyfair.com](http://www.sublettecountyfair.com) and follow the links.*



## TASTE OF INSANITY

Wednesday, July 24

7:00PM

Warm-Up Arena

Contact: Kailey Barlow — 307-276-5373

[Entry Information](#)

Enter by emailing [info@livealittleproductions.com](mailto:info@livealittleproductions.com)

Entry Deadline: July 24

Entry Fee: Varies

*For more information, scan the appropriate QR code or visit [www.sublettecountyfair.com](http://www.sublettecountyfair.com) and follow the links.*



## QUICK DRAW & LIVE AUCTION

Friday, July 26

7:00PM

Community Hall

Contact: Sharon Schell — 307-749-7661

[Entry Information](#)

Enter by calling Sharon Schell for more information.

Entry Deadline: July 1

Entry Fee: \$0

*For more information, scan the appropriate QR code or visit [www.sublettecountyfair.com](http://www.sublettecountyfair.com) and follow the links.*



# ENTERTAINMENT

2024

## WEDNESDAY NIGHT: TASTE OF INSANITY

Get ready for Sublette County Fair's newest event — A Taste of Insanity, featuring the Mini Monster Truck Mafia, including the youngest monster truck talent in the world, Professional Tough Truck Racing, Turf Wars Mowdown Professional Lawn Mower Racing, and a Pre-Show Pit Party! Sound exciting?! Locals can compete too! Please contact the Fair Office at 307-276-5373 for more information on how to compete.

## THURSDAY NIGHT: LITTLE BUCKAROO RODEO

The Little Buckaroo Rodeo, put on by CT Rodeo has been a popular event at the Sublette County Fair for 30 years! From stick horse barrels to mini bulls, there is something for all young rodeo enthusiasts to compete in. It is recommended that entries be completed online by July 17. No entries will be accepted after July 22.

## FRIDAY NIGHT: HORSE PULLS

They are back again! The Horse Pulls draw a crowd year after year. Come watch these incredible equine athletes and their teamsters as they work together to pull a sleigh weighed down with concrete blocks. Some of these teams pull as much as 10,000 pounds!

## SATURDAY NIGHT: HUCKLEBERRY ROAD

Huckleberry Road is a Western Country Rock band based out of Reno, Nevada. It's members are Robert James Clark, Anthony Vairetta, and Dillon Secklin. Music has always been a lifelong passion with influences from legends like Stevie Ray Vaughan, Jimi Hendrix, and Zak Wylde; these three have their roots firmly planted in the blues, but have also been drawn in by the old sounds and storytelling of country music. Huckleberry Road brings a mixed bag of Jack Daniels drinking, up tempo, rock infused with heartfelt country music! This is a free show!

## DJ'S EVERY NIGHT

Wednesday, July 24: Steven Winer

Thursday, July 25: Dynamic Sound & Lighting

Friday, July 26: Rodney Feiock

## HYPNOTIST CORRIE J

Hypnotist Corrie J knows that great entertainment isn't just about him, it's about you, the audience. That's how you know you're going to have a great night - because you and your friends are at the front and center of all the fun. Hailing from beautiful Saskatoon, Hypnotist Corrie J has been entertaining crowds for decades, and uses his long experience to keep his audience engaged. So get ready to be on the edge of your seat! A dedicated family man, Hypnotist Corrie J makes sure that each and every show passes the test with his wife and young daughter first, so you can be sure that you're in for some great, all ages entertainment that will leave you feeling like a kid again. We welcome Hypnotist Corrie J to the stage to get the show started. Prepare to be amazed as you and your friends are drawn into the magical world of hypnosis.

## ALEX CLARK

Alex is a quick-witted, energetic, and bright comedian. A comedian that just happens to juggle. The perfect guy to impress your friends, your mom, and your boss. His epic blend of circus and stand-up is what keeps audiences at the edge of their seats. He's juggled chainsaws, tempted fate with fire, and balanced big unicycles, but these are all footnotes to his wise-cracking, mile-a-minute laughs. While most comedians tell jokes from the safety of the stage, Alex brings it to the next level finishing his act from high above the crowd balanced atop a free standing ladder. It's dangerous, but it makes him one comedian that stands above the rest. (#literally!) His act is polished, riveting, and hilarious; the perfect mix of both awe and laughter. He was even named one of 2014's Hottest Variety Acts. Put simply, it's really freaking cool. One visit to his YouTube page and you'll see why! With over 2.4 MILLION FOLLOWERS, Alex's cartoons make him a hit online as well.

# ENTERTAINMENT

2024

## OFF AXIS STUNT SHOW

Our biggest performance featuring all of our acts including Trampwall, BMX, Parkour, Teeterboard, Slam Dunk Contests, Comedy and More! Perfect for fairs and festivals this show is 20-30 minutes of non stop excitement. This show is 100% self sufficient, we can provide lighting, sound systems, and everything needed for a high energy show that will keep your audience at the end of their seat, and its fully customizable depending on your budget. We're based out of Las Vegas and are looking forward to putting on a phenomenal acrobatic performance for you!

## ADVENTURE ZONE & CARNIVAL GAMES

New this year, is the exciting Adventure Zone, Pirate's Rebellion, and Carnival Games! The Adventure Zone will contain a challenging obstacle course, three slides, an adrenaline attraction (eliminator, bungee run, or wrecking ball), an interactive attraction (bumper boats or maze), two cute bouncy houses, one playland, and a bouncy house / slide combo. The Pirate's Rebellion takes place in a massive 2500 square foot pool with eight pedal style bumper boats. There will also be a maze. And, for the first time in a very long time, there will even be a few carnival games for everyone to take part in!

## WILD WEST FUN PARK & LASER FAST DRAW

Enjoy a variety of self play activities under the colorful shade canopies daily at the Wild West Fun Park. The Wild West Fun Park is a specialty area for children ten and under! Come out and make memories with a FREE "Wanted Poster" as a souvenir of your fair experience. For those a little older, test your reflexes and compete in the Laser Fast Draw with our authentic laser targets that measure your speed to the 1000th of a second! Young Guns Entertainment simulates the Wild West Experience with replica Colt 45's outfitted with lasers to determine who has the fastest draw at the fair!

## LANKY THE CLOWN

Lanky's Corner is one of the most energetic and colorful ground entertainment acts at our fair. Lanky has over thirty-five years of clowning experience and a large variety of services that make him a great source of comedy entertainment. He has traveled the world to bring smiles and laughter in over ten different countries. Don't be afraid of this clown, he is a great guy!

## PETTING ZOO & BARNYARD RACES

A county fair favorite — the petting zoo and barnyard races! The petting zoo will be open 11:00AM to 8:00PM daily and will feature goats, sheep, calves, pigs, mini horses, mini donkeys, and alpacas, and possibly more! The Barnyard Races will take place several times a day. Come to the racetrack to watch the pigs and other animals race.

## TEA PARTY

The Big Piney Library is excited to be hosting a tea party at the fair! Bring your fanciest hat, a nice dress and show up for a tea party... or show up in your barn attire — all are welcome! Tea and cups will be provided by the Big Piney Library. Tea time, 10:30AM, Thursday, July 25 at the west end of the Event Center.



# ENTERTAINMENT

2024

## MUSICAL ACT: JARED ROGERSON

We love our local talent and Jared Rogerson is no exception. Jared Rogerson is an artist whose cowboy roots have blossomed into a distinct country vibe "...crafted to appeal to cowpokes who are equally comfortable with Chris LeDoux and Bon Jovi" – American Cowboy Magazine. As part of a western generation that grew up on Chris LeDoux, he continues to carry the torch for the culture like other contemporary artists such as Aaron Watson and Cody Johnson. His inevitable career in music was delayed due to a focus on rodeo where he competed as a bareback bronc rider at high school, collegiate, and professional levels. A final rodeo wreck spurred Jared into making music a priority. He now sports an L-shaped scar on the inner joint of his riding arm where the biceps tendon was re-attached. Not the worst of his injuries, but it occurred at a pivotal point in time, allowing him to escape with his life and live a different dream. That same grit and determination Jared developed through rodeo has translated across disciplines resulting in the production of 6 critically acclaimed albums and live performances across the U.S. and Europe. While not on the road, Jared can usually be found in the saddle traversing rugged mountain ranges near his home in Wyoming.

## MUSICAL ACT: TRIED AND TRUE

Tried and True is a duo that is easy to listen to, audience pleasing, and fun. The duo includes Mike True on the 12-string and harmonica and Becky True on the 6-string and wood block. Their music might be best described as an eclectic mix of classic Americana — providing listeners with familiar favorites and hopefully some pleasant surprises. They have been blessed to be returning entertainment at resorts, dude ranches, breweries, golf clubs, restaurants, and bars and grills in Wyoming, Arizona, Montana and Texas. Interacting with the audience in a friendly way is one of their strengths and a favorite part of their job.

## MUSICAL ACT: JANE BELL

Wyoming native, Jane Bell, grew up in Cody, Wyoming and is still proud to call it her home! Jane has always had a passion for music and singing and has been performing for nearly a decade. She performs mostly country western and folk covers. Jane has strong ties to Sublette County and we are excited to have her at the Sublette County Fair again this year.





# MEET THE FAIR BOARD

2024

## GARY HAYWARD, FAIR BOARD CHAIRMAN

Gary is a resident of Daniel WY where he and his wife Jennifer have raised three kids, one still attending Pinedale High School, and are active leaders in 4H and FFA programs. He graduated from the University of Wyoming in 1996 with a B.S. degree in Rangeland Ecology and Watershed Management and is currently employed as a rangeland professional. Gary is an avid outdoors man and loves all that Sublette County has to offer, especially Sublette County Fair!

## NANCY ESPENSCHIED, FAIR BOARD TREASURER

Nancy was born and raised in Sublette County and has spent her life as a rancher near Big Piney. Nancy participated in 4-H while growing up — in about every project available at the time. She was also a 4-H Horse Leader for many years, which she considers one of the most fun and productive things she's done in her whole life. Her two sons participated in 4-H projects as they grew up, and now her grandkids are active 4-H members and participants in the Sublette County Fair, so the Sublette County Fair has always been an important event.

## MICHAEL HENN, FAIR BOARD

Michael, a Wyoming native, has been involved in agriculture and natural resources his entire life. In 2015 Michael took the District Manager position at the Sublette County Conservation District. Michael grew up through the ranks of 4-H and FFA. Michael joined the Sublette County Fair Board in 2018 and is excited to be a part of helping put on a successful fair. In his free time Michael enjoys team roping, hunting, fishing, backpacking, and spending time with his wife Kari and daughters Karsyn and Baylee.

## KEVIN HUGHES, FAIR BOARD

Kevin was raised in Sublette County and started participating in 4-H as soon as he could. He married his high school sweetheart and raised four boys who all were active in 4-H. His kids participated in the steer, heifer, sheep, and muzzle loader projects. His entire family loves fair and looks forward to it every year.

## SUSAN NESSAN, FAIR BOARD

Susan is proud to say that she is a born and raised resident of Sublette County. She graduated from Big Piney High School and attended dental school in Denver, Colorado. Her husband, Doug, and her have raised three beautiful daughters, Jamie, Jennifer, and Janelle. She has many interests in life that keep her busy, but most of all, she enjoys being with her family and friends. She has been a 4-H leader for many years and has also been involved with the 4-H Council and 4-H Foundation. She is thankful to be a part of Sublette County and its heritage.

## KAILEY BARLOW, FAIR BOARD MANAGER

Kailey grew up on a ranch in Sublette County. She was active in 4-H for ten years with several different projects, including horse, market beef, breeding beef, sewing, crocheting, quilting, leadership, livestock judging, and horse judging. Kailey also served on the Wyoming 4-H State Leadership Team. After graduating from Big Piney High School, she attended and graduated from the University of Wyoming with a B.S. in Agricultural Business. Kailey is a board member for the Wyoming Angus Association, Wyoming Young Farmers & Ranchers, and Utah Beef Improvement Association and active in several other ag organizations. She also enjoys raising and showing registered Angus and Simmental cattle and doing anything outdoors, but the thing she loves most is her little boy, Bo!

